

## TRAM1 antibody

Catalog No: #22159

Orders: [order@signalwayantibody.com](mailto:order@signalwayantibody.com)Support: [tech@signalwayantibody.com](mailto:tech@signalwayantibody.com)

## Description

Product Name	TRAM1 antibody
Host Species	Rabbit
Clonality	Polyclonal
Purification	Purified by antigen-affinity chromatography.
Applications	WB IF
Species Reactivity	Hu
Immunogen Type	Peptide
Immunogen Description	Synthetic peptide contain a sequence corresponding to a region within amino acids 310 and 374 of translocation associated membrane protein 1
Target Name	TRAM1
Other Names	TRAM; TRAMP; PS-8; PRO1292
Accession No.	Swiss-Prot:Q15629 Gene ID:23471
Uniprot	Q15629
GeneID	23471;
Concentration	1mg/ml
Formulation	Supplied in 0.1M Tris-buffered saline with 10% Glycerol (pH7.0). 0.01% Thimerosal was added as a preservative.
Storage	Store at -20°C for long term preservation (recommended). Store at 4°C for short term use.

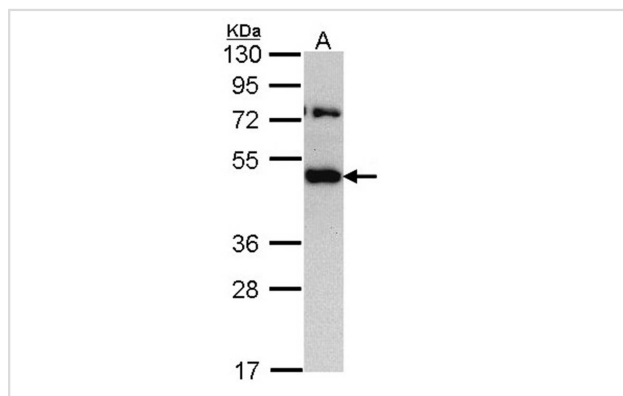
## Application Details

Predicted MW: 43kd

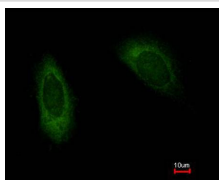
Western blotting: 1:500-1:3000

Immunofluorescence: 1:100-1:200

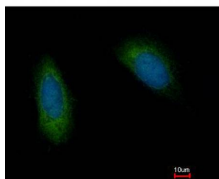
## Images



Sample (30 ug of whole cell lysate)  
A: H1299  
10% SDS PAGE  
Primary antibody diluted at 1: 1000



Costained with Hoechst 33342



Immunofluorescence analysis of methanol-fixed HeLa, using TRAM1 antibody at 1: 500 dilution.

---

Note: This product is for in vitro research use only