

PPAP2C Antibody

Catalog No: #37206

Orders: order@signalwayantibody.comSupport: tech@signalwayantibody.com

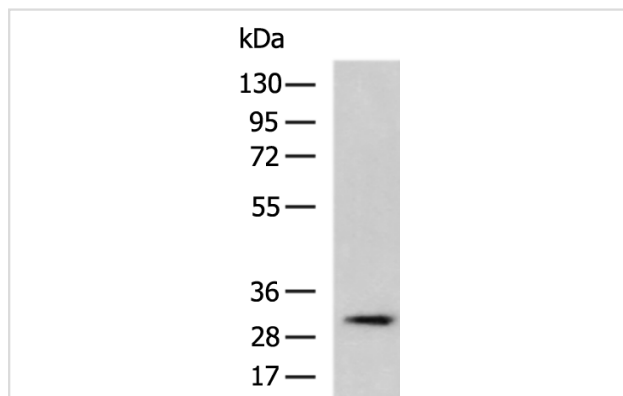
Description

Product Name	PPAP2C Antibody
Host Species	Rabbit
Clonality	Polyclonal
Purification	Antigen affinity purification.
Applications	WB
Species Reactivity	Hu
Specificity	The antibody detects endogenous levels of total PPAP2C protein.
Immunogen Type	Peptide
Immunogen Description	Synthetic peptide corresponding to a region derived from internal residues of human Phosphatidic acid phosphatase type 2C
Target Name	PPAP2C
Other Names	LPP2; PAP-2c; PAP2-g
Accession No.	Swiss-Prot#: O43688NCBI Gene ID: 8612Gene Accssion: NP_003703
Uniprot	O43688
GeneID	8612;
SDS-PAGE MW	33kd
Concentration	1.5mg/ml
Formulation	Rabbit IgG in pH7.4 PBS, 0.05% NaN ₃ , 40% Glycerol.
Storage	Store at -20°C

Application Details

Western blotting: 1:500-1:2000

Images



Gel: 8%SDS-PAGE
 Lysate: 40 μ g
 Lane: MCF7 cell lysate
 Primary antibody: PLPP2 Antibody at dilution 1/550
 Secondary antibody: Goat anti rabbit IgG at 1/5000 dilution
 Exposure time: 1 minute

Background

The protein encoded by this gene is a member of the phosphatidic acid phosphatase (PAP) family. PAPs convert phosphatidic acid to diacylglycerol,

and function in de novo synthesis of glycerolipids as well as in receptor-activated signal transduction mediated by phospholipase D. This protein is similar to phosphatidic acid phosphatase type 2A (PPAP2A) and type 2B (PPAP2B). All three proteins contain 6 transmembrane regions, and a consensus N-glycosylation site. This protein has been shown to possess membrane associated PAP activity. Three alternatively spliced transcript variants encoding distinct isoforms have been reported.

Note: This product is for in vitro research use only