

CD93 Antibody

Catalog No: #37276

Orders: order@signalwayantibody.comSupport: tech@signalwayantibody.com

Description

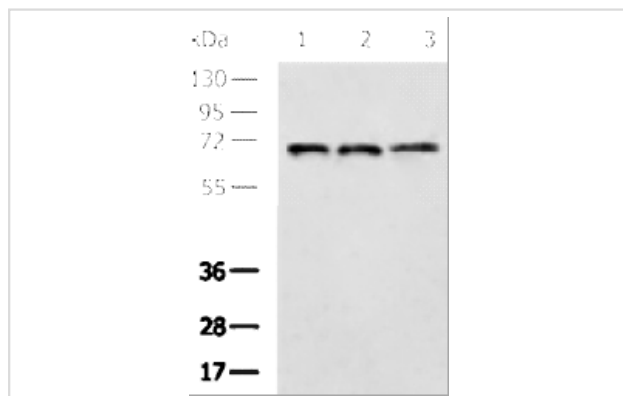
Product Name	CD93 Antibody
Host Species	Rabbit
Clonality	Polyclonal
Purification	Antigen affinity purification.
Applications	WB IHC
Species Reactivity	Human
Specificity	The antibody detects endogenous levels of total CD93 protein.
Immunogen Type	Peptide
Immunogen Description	Synthetic peptide corresponding to a region derived from internal residues of human CD93 molecule
Target Name	CD93
Other Names	C1QR1; C1qRP; CDw93; ECSM3; MXRA4; C1qR(P); dJ737E23.1
Accession No.	Swiss-Prot#: Q9NPY3NCBI Gene ID: 22918Gene Accssion: NP_036204
Uniprot	Q9NPY3
GeneID	22918;
Calculated MW	69KD
Concentration	0.5mg/ml
Formulation	Rabbit IgG in pH7.4 PBS, 0.05% NaN ₃ , 40% Glycerol.
Storage	Store at -20°C

Application Details

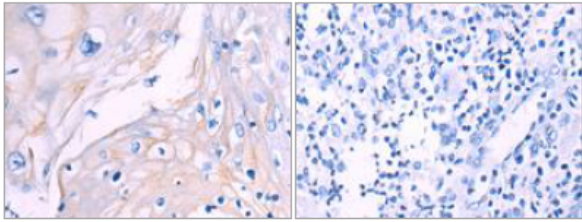
Western blotting: 1:500-1:2000

Immunohistochemistry: 1:50-1:100

Images



Gel: 8%SDS-PAGE Lysate: 40 μ g Lane 1-3: MCF7, 293T, Hela cell lysates Primary antibody: CD93 Antibody at dilution 1/400 Secondary antibody: Goat anti rabbit IgG at 1/5000 dilution Exposure time: 40 seconds



The image on the left is immunohistochemistry of paraffin-embedded Human esophagus cancer tissue using CD93 Antibody at dilution 1/50, on the right is treated with synthetic peptide. (Original magnification: $\times 200$)

Background

The protein encoded by this gene is a cell-surface glycoprotein and type I membrane protein that was originally identified as a myeloid cell-specific marker. The encoded protein was once thought to be a receptor for C1q, but now is thought to instead be involved in intercellular adhesion and in the clearance of apoptotic cells. The intracellular cytoplasmic tail of this protein has been found to interact with moesin, a protein known to play a role in linking transmembrane proteins to the cytoskeleton and in the remodelling of the cytoskeleton.

Note: This product is for in vitro research use only