

Histone H4(Di-Methyl-Lys20) Rabbit Polyclonal Antibody

Catalog No: #HW055

Orders: order@signalwayantibody.com
Support: tech@signalwayantibody.com

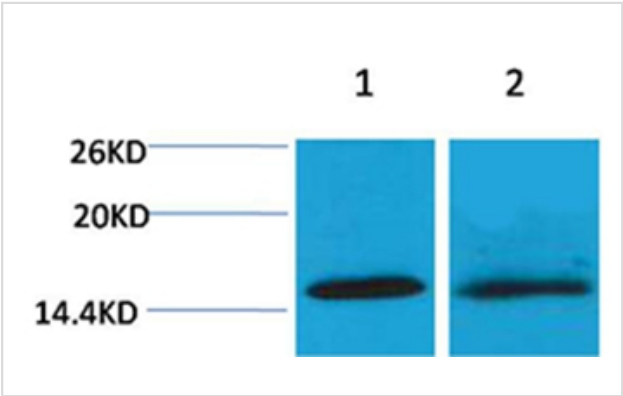
Description

Product Name	Histone H4(Di-Methyl-Lys20) Rabbit Polyclonal Antibody
Host Species	Rabbit
Clonality	Polyclonal
Purification	Affinity purification using immunogen.
Applications	WB
Species Reactivity	Hu Rt Ms
Specificity	The Histone H4(Di-methyl-Lys20) Rabbit Polyclonal Antibody detects endogenous Histone H4 (Di-methyl-Lys20) protein.
Immunogen Type	peptide
Immunogen Description	A synthetic Di-methylated peptide corresponding to residues surrounding Lys36 of human histone H4.
Target Name	Histone H4(Di-Methyl-Lys20)
Modification	Methyl
Other Names	Histone 1 H4 antibody; HIST1H4K antibody; MGC24116 antibody; dJ160A22.1 antibody
Accession No.	Swiss-Prot#:P62805
Uniprot	P62805
GeneID	121504;554313;8294;8359;8360;8361;8362;8363;8364;8365;8366;8367;8368;8370;
SDS-PAGE MW	14kd
Concentration	1.0mg/ml
Formulation	Rabbit Antiserum, containing 0.02% sodium azide as Preservative and 50% Glycerol.
Storage	Store at -20°C

Application Details

Western blotting: 1:500~1:1000

Images



Western blot analysis of 1) Hela, 2)3T3, using #HW055 diluted at 1:2,000.

Background

Histone H4 is one of the 5 main histone proteins involved in the structure of chromatin in eukaryotic cells. H4 is a structural component of the nucleosome, and is subject to covalent modification, including acetylation and methylation, which may alter expression of genes located on DNA associated with its parent histone octamer.

Note: This product is for in vitro research use only