

# Histone H4(Tri-Methyl-Lys20) Rabbit Polyclonal Antibody

Catalog No: #HW056

Orders: [order@signalwayantibody.com](mailto:order@signalwayantibody.com)Support: [tech@signalwayantibody.com](mailto:tech@signalwayantibody.com)

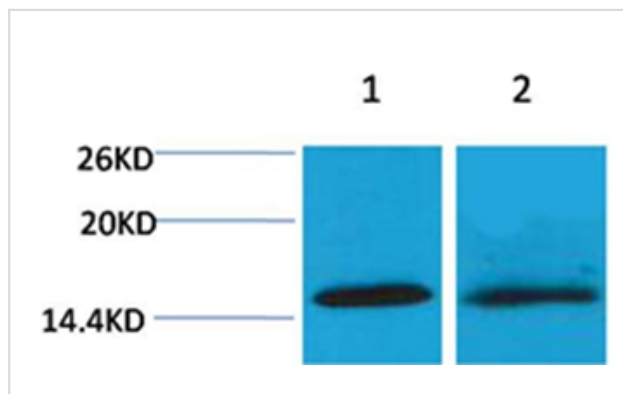
## Description

Product Name	Histone H4(Tri-Methyl-Lys20) Rabbit Polyclonal Antibody
Host Species	Rabbit
Clonality	Polyclonal
Purification	Affinity purification using immunogen.
Applications	WB
Species Reactivity	Hu Rt Ms
Specificity	The Histone H4(Tri-methyl-Lys20) Rabbit Polyclonal Antibody detects endogenous Histone H4 (Tri-methyl-Lys20) protein.
Immunogen Type	peptide
Immunogen Description	A synthetic Tri-methylated peptide corresponding to residues surrounding Lys20 of human histone H4.
Target Name	Histone H4(Tri-Methyl-Lys20)
Modification	Methyl
Other Names	Histone 1 H4 antibody; HIST1H4K antibody; MGC24116 antibody; dJ160A22.1 antibody
Accession No.	Swiss-Prot#:P62805
Uniprot	P62805
GeneID	121504;554313;8294;8359;8360;8361;8362;8363;8364;8365;8366;8367;8368;8370;
SDS-PAGE MW	14kd
Concentration	1.0mg/ml
Formulation	Rabbit Antiserum, containing 0.02% sodium azide as Preservative and 50% Glycerol.
Storage	Store at -20°C

## Application Details

Western blotting: 1:500~1:1000

## Images



Western blot analysis of 1) Hela, 2)3T3, using #HW056 diluted at 1:2,000.

## Background

---

Histone H4 is one of the 5 main histone proteins involved in the structure of chromatin in eukaryotic cells. H4 is a structural component of the nucleosome, and is subject to covalent modification, including acetylation and methylation, which may alter expression of genes located on DNA associated with its parent histone octamer.

---

Note: This product is for in vitro research use only