

Histone H2B(mono-Methyl-Lys5) Rabbit Polyclonal Antibody

Catalog No: #HW064

Orders: order@signalwayantibody.comSupport: tech@signalwayantibody.com

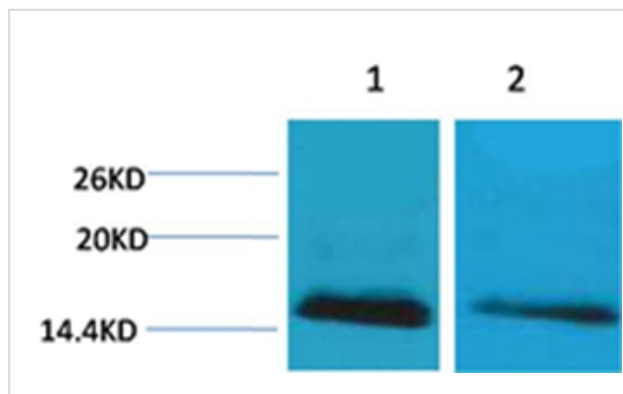
Description

Product Name	Histone H2B(mono-Methyl-Lys5) Rabbit Polyclonal Antibody
Host Species	Rabbit
Clonality	Polyclonal
Purification	Affinity purification using immunogen.
Applications	WB
Species Reactivity	Hu Rt Ms
Specificity	The Histone H2B(mono-methyl-Lys5) Rabbit Polyclonal Antibody detects endogenous Histone H2B (mono-methyl-Lys5) protein.
Immunogen Type	peptide
Immunogen Description	A synthetic Mono-methylated peptide corresponding to residues surrounding Lys25 of human histone H2B.
Target Name	Histone H2B(mono-Methyl-Lys5)
Modification	Methyl
Other Names	H2B GL105 antibody; H2B.1 antibody; Histone H2B type 1B antibody; HIST1H2BB antibody
Accession No.	Swiss-Prot#:P33778
Uniprot	P33778
GeneID	3018;
SDS-PAGE MW	14kd
Concentration	1.0mg/ml
Formulation	Rabbit Antiserum, containing 0.02% sodium azide as Preservative and 50% Glycerol.
Storage	Store at -20°C

Application Details

Western blotting: 1:500~1:1000

Images



Western blot analysis of 1) Hela, 2)3T3, using #HW064 diluted at 1:2,000.

Background

Histone H2B is one of the 5 main histone proteins involved in the structure of chromatin in eukaryotic cells.

Note: This product is for in vitro research use only