

## GAPDH Rabbit Polyclonal Antibody

Catalog No: #37985

Orders: [order@signalwayantibody.com](mailto:order@signalwayantibody.com)Support: [tech@signalwayantibody.com](mailto:tech@signalwayantibody.com)

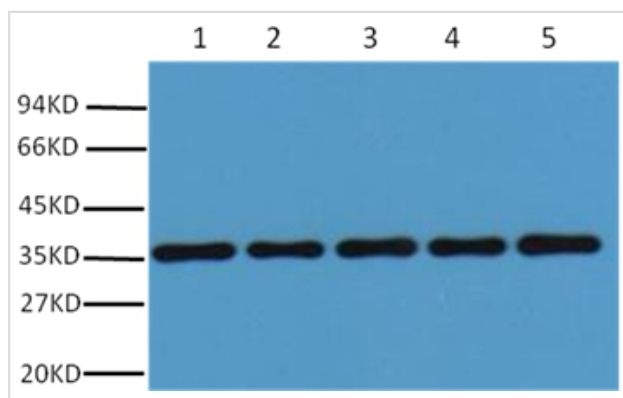
## Description

Product Name	GAPDH Rabbit Polyclonal Antibody
Host Species	Rabbit
Clonality	Polyclonal
Purification	Affinity purification using immunogen.
Applications	WB,IHC
Species Reactivity	Hu Rt Ms Mk Chk Hm Sh Xenopus
Specificity	Antibody detects endogenous GAPDH protein.
Target Name	GAPDH
Other Names	G3PD; GAPD; MGC88685
Accession No.	Swiss-Prot#:P04406
Uniprot	P04406
GeneID	2597;
SDS-PAGE MW	37kd
Concentration	1.0mg/ml
Formulation	IgG in phosphate buffered saline (without Mg <sup>2+</sup> and Ca <sup>2+</sup> ), pH 7.4, 150mM NaCl, 0.02% sodium azide and 50% glycerol.
Storage	Store at -20°C

## Application Details

Western blotting: 1:5000~1:20000

## Images



Western blot analysis of 293T (1), Rat brain (2), NIH 3T3(3), Sheep Muscle(4),Rabbit testis(5), using #37985 diluted at 1:20,000.

## Background

Glyceraldehyde 3 phosphate dehydrogenase (GAPDH) is well known as one of the key enzymes involved in glycolysis. GAPDH is constitutively expressed in almost all tissues at high levels, therefore antibodies against GAPDH are useful as loading controls for Western Blotting. Some physiological factors, such as hypoxia and diabetes, increase GAPDH expression in certain cell types.

---

Note: This product is for in vitro research use only