

β -tubulin Mouse Monoclonal Antibody

Catalog No: #38071

Orders: order@signalwayantibody.comSupport: tech@signalwayantibody.com

Description

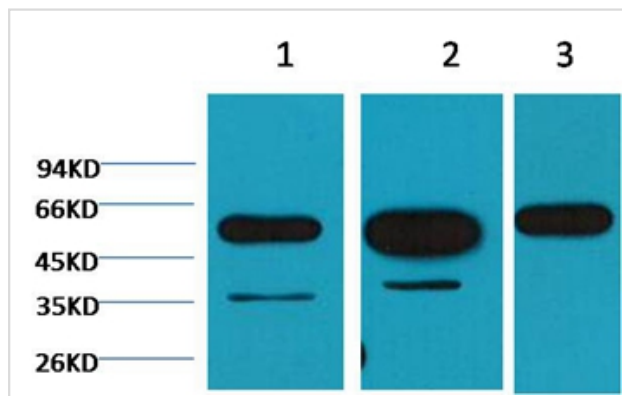
Product Name	β -tubulin Mouse Monoclonal Antibody
Host Species	Mouse
Clonality	Monoclonal
Purification	Affinity purification using immunogen.
Applications	WB,IF
Species Reactivity	Hu Rt Ms
Specificity	The β -tubulin antibody can detect endogenous β -tubulin protein.
Target Name	β -tubulin
Other Names	beta 5-tubulin; beta 1b tubulin; beta-4 tubulin; M40; MGC117247; MGC16435; OK/SW-cl.56; TBB5; TUBB; TUBB1; TUBB5
Accession No.	Swiss-Prot#:P07437
Uniprot	P07437
GeneID	203068;
SDS-PAGE MW	55kd
Concentration	1.0mg/ml
Formulation	Mouse IgG1 in phosphate buffered saline (without Mg ²⁺ and Ca ²⁺), pH 7.4, 150mM NaCl, 0.02% sodium azide and 50% glycerol.
Storage	Store at -20°C

Application Details

WB dilution: 1:5000~1:10000

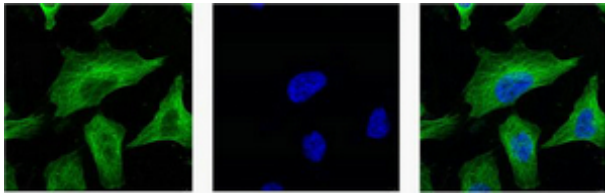
IF dilution:1:200

Images



Western blot analysis of 1) Hela, 2) Mouse Brain tissue, 3) Rat Brain tissue, using #38071 diluted at 1:5,000.

IF analysis of Hela with antibody (Left) and DAPI (Right)
diluted at 1:100.



Background

Microtubules are constituent parts of the mitotic apparatus, cilia, flagella, and elements of the cytoskeleton. They consist principally of 2 soluble proteins, alpha- and beta-tubulin, each of about 55,000 Da. Antibodies against beta Tubulin are useful as loading controls for Western Blotting. However it should be noted that levels of β -Tubulin may not be stable in certain cells. For example, expression of β -Tubulin in adipose tissue is very low and therefore β -Tubulin should not be used as loading control for these tissues.

Note: This product is for in vitro research use only