

## Nrf2 (Acetyl-Lys599) Polyclonal Antibody

Catalog No: #HW147

Package Size: #HW147-1 50ul #HW147-2 100ul

Orders: [order@signalwayantibody.com](mailto:order@signalwayantibody.com)Support: [tech@signalwayantibody.com](mailto:tech@signalwayantibody.com)

## Description

Product Name	Nrf2 (Acetyl-Lys599) Polyclonal Antibody
Host Species	Rabbit
Clonality	Polyclonal
Purification	The antibody was affinity-purified from rabbit antiserum by affinity-chromatography using epitope-specific immunogen.
Applications	WB ELISA
Species Reactivity	Hu Ms Rt
Specificity	Acetyl-Nrf2 (K599) Polyclonal Antibody detects endogenous levels of Nrf2 protein only when acetylation at K599.
Immunogen Description	Synthesized peptide derived from the C-terminal region of human Nrf2 around the acetylation site of K599.
Target Name	Nrf2
Modification	Acetyl
Other Names	NFE2L2; NRF2; Nuclear factor erythroid 2-related factor 2; NF-E2-related factor 2; NFE2-related factor 2; HEBP1; Nuclear factor, erythroid derived 2, like 2
Accession No.	Swiss-Prot: Q16236NCBI Gene ID: 4780
Uniprot	Q16236
GeneID	4780;
Target Species	human
SDS-PAGE MW	68kd
Concentration	1mg/ml
Formulation	Liquid in PBS containing 50% glycerol, 0.5% BSA and 0.02% sodium azide.
Storage	Store at -20°C/1 year

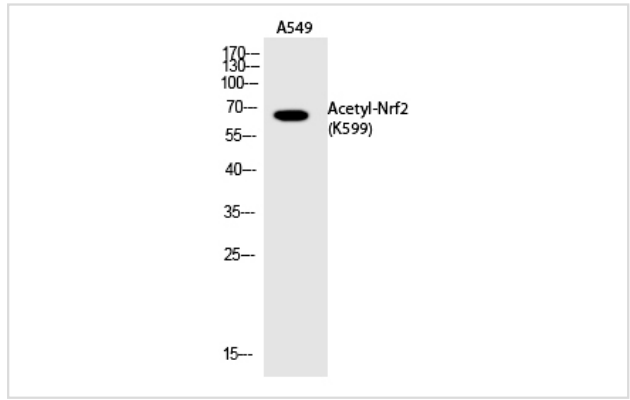
## Application Details

Western blotting: 1/500 - 1/2000

ELISA: 1/10000

Not yet tested in other applications

## Images



Western Blot analysis of A549 cells using Acetyl-Nrf2 (K599)  
Polyclonal Antibody

Note: This product is for in vitro research use only