

KHS antibody

Catalog No: #22583

Orders: order@signalwayantibody.comSupport: tech@signalwayantibody.com

Description

Product Name	KHS antibody
Host Species	Rabbit
Clonality	Polyclonal
Purification	Purified by antigen-affinity chromatography.
Applications	WB IHC IF
Species Reactivity	Hu
Immunogen Type	Peptide
Immunogen Description	Synthetic peptide contain a sequence corresponding to a region within amino acids 417 and 482 of KHS
Target Name	KHS
Accession No.	Swiss-Prot:Q9Y4K4Gene ID:11183
Uniprot	Q9Y4K4
GeneID	11183;
Concentration	1mg/ml
Formulation	Supplied in 0.1M Tris-buffered saline with 10% Glycerol (pH7.0). 0.01% Thimerosal was added as a preservative.
Storage	Store at -20°C for long term preservation (recommended). Store at 4°C for short term use.

Application Details

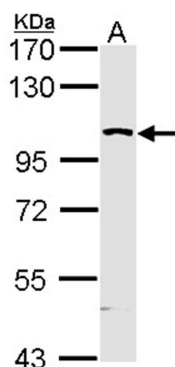
Predicted MW: 95kd

Western blotting: 1:500-1:3000

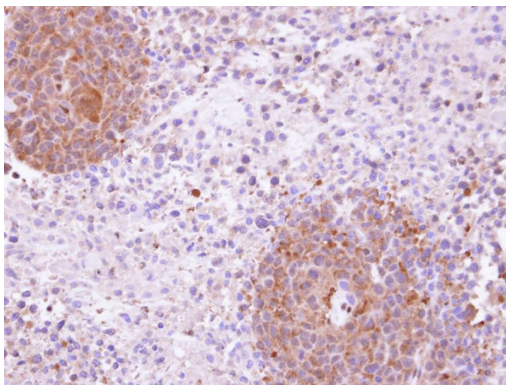
Immunohistochemistry: 1:100-1:500

Immunofluorescence: 1:100-1:200

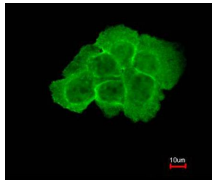
Images



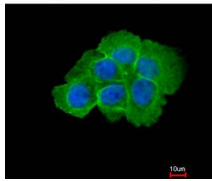
Sample (30 ug of whole cell lysate)
A: Molt-4
12% SDS PAGE
MAP4K5 antibody diluted at 1: 5000



Immunohistochemical analysis of paraffin-embedded SAS xenograft, using KHS antibody at 1: 100 dilution.



Merged with DNA probe



Immunofluorescence analysis of paraformaldehyde-fixed A431, using KHS antibody at 1: 200 dilution.

Background

This gene encodes a member of the serine/threonine protein kinase family, that is highly similar to yeast SPS1/STE20 kinase. Yeast SPS1/STE20 functions near the beginning of the MAP kinase signal cascades that is essential for yeast pheromone response. This kinase was shown to activate Jun kinase in mammalian cells, which suggested a role in stress response. Two alternatively spliced transcript variants encoding the same protein have been described for this gene. [provided by RefSeq]

Note: This product is for in vitro research use only