

DNA Polymerase gamma antibody

Catalog No: #22870



Orders: [order@signalwayantibody.com](mailto:order@signalwayantibody.com)  
Support: [tech@signalwayantibody.com](mailto:tech@signalwayantibody.com)

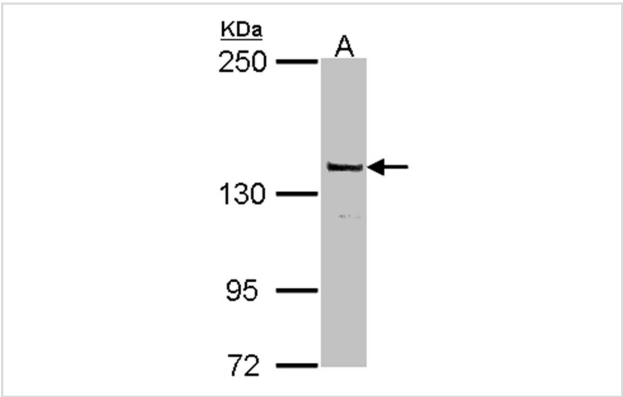
Description

|                       |  |
|-----------------------|--|
| Product Name          | DNA Polymerase gamma antibody  |
| Host Species          | Rabbit   |
| Clonality             | Polyclonal   |
| Purification          | Purified by antigen-affinity chromatography.   |
| Applications          | WB IHC IF  |
| Species Reactivity    | Hu   |
| Immunogen Type        | Recombinant Protein  |
| Immunogen Description | Recombinant protein fragment contain a sequence corresponding to a region within amino acids 779 and 1191 (P54098) of DNA polymerase gamma |
| Target Name           | DNA Polymerase gamma   |
| Accession No.         | Swiss-Prot:P54098Gene ID:5428  |
| Uniprot               | P54098   |
| GeneID                | 5428;  |
| Concentration         | 0.67mg/ml  |
| Formulation           | Supplied in 1XPBS, 1%BSA, 20% Glycerol (pH7.0). 0.01% Thimerosal was added as a preservative.  |
| Storage               | Store at -20°C for long term preservation (recommended). Store at 4°C for short term use.  |

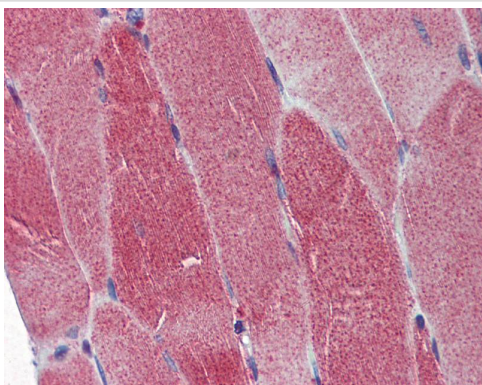
Application Details

|                                   |
|-----------------------------------|
| Predicted MW: 140kd               |
| Western blotting: 1:500-1:3000    |
| Immunohistochemistry: 1:100-1:250 |
| Immunofluorescence: 1:100-1:200   |

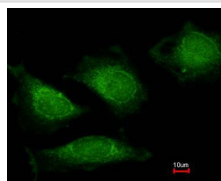
Images



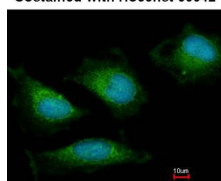
Sample (30 ug of whole cell lysate)  
A: MCF-7  
5% SDS PAGE  
Primary antibody diluted at 1: 1000



Immunohistochemical analysis of paraffin-embedded Skeletal Muscle , using DNA polymerase gamma antibody(10 ug/ml).



Costained with Hoechst 33342



Immunofluorescence analysis of methanol-fixed HeLa, using DNA polymerase gamma antibody at 1: 200 dilution.

## Background

Mitochondrial DNA polymerase is heterotrimeric, consisting of a homodimer of accessory subunits plus a catalytic subunit. The protein encoded by this gene is the catalytic subunit of mitochondrial DNA polymerase. The encoded protein contains a polyglutamine tract near its N-terminus that may be polymorphic. Defects in this gene are a cause of progressive external ophthalmoplegia with mitochondrial DNA deletions 1 (PEOA1), sensory ataxic neuropathy dysarthria and ophthalmoparesis (SANDO), Alpers-Huttenlocher syndrome (AHS), and mitochondrial neurogastrointestinal encephalopathy syndrome (MNGIE). Two transcript variants encoding the same protein have been found for this gene. [provided by RefSeq]

Note: This product is for in vitro research use only