

GLI3 Antibody

Catalog No: #43925

Orders: order@signalwayantibody.comSupport: tech@signalwayantibody.com

Description

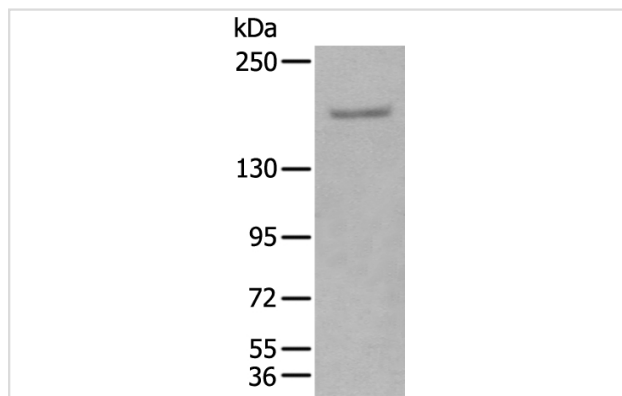
Product Name	GLI3 Antibody
Host Species	Rabbit
Clonality	Polyclonal
Purification	Antigen affinity purification
Applications	IHC WB
Species Reactivity	Hu Ms
Specificity	The antibody detects endogenous levels of total GLI3 protein.
Immunogen Type	peptide
Immunogen Description	Synthetic peptide of human GLI3
Target Name	GLI3
Other Names	PHS; ACLS; GCPS; PAPA; PAPB; PAP-A; PAPA1; PPDIV; GLI3FL; GLI3-190
Accession No.	Swiss-Prot#: P10071NCBI Gene ID: 2737
Uniprot	P10071
GeneID	2737;
Calculated MW	170kd
Concentration	0.7mg/ml
Formulation	Rabbit IgG in pH7.4 PBS, 0.05% NaN ₃ , 40% Glycerol.
Storage	Store at -20°C

Application Details

Western blotting: 1:200-1000

Immunohistochemistry: 1: 20-100

Images



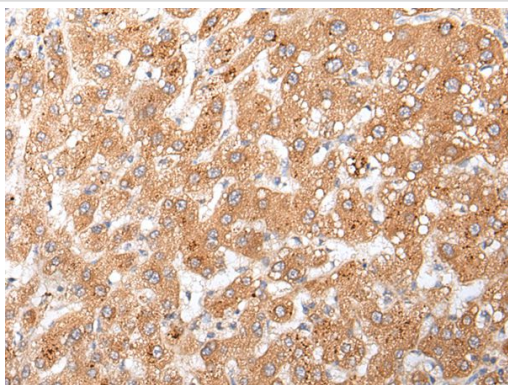
Gel: 6%SDS-PAGE

Lysate: 40 µg, Lane: Mouse liver tissue,

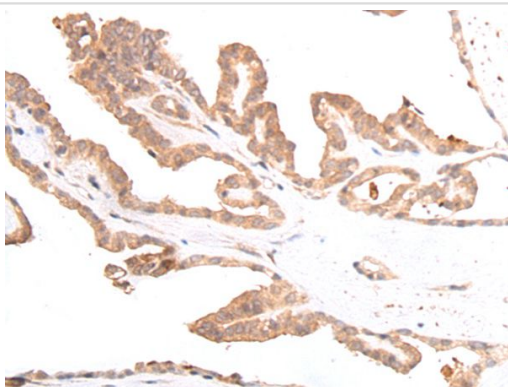
Primary antibody:GLI3 antibody at dilution 1/250 dilution,

Secondary antibody: Goat anti rabbit IgG at 1/8000 dilution,

Exposure time: 2 minutes



The image on the left is immunohistochemistry of paraffin-embedded Human liver cancer tissue using GLI3 Antibody at dilution 1/20, on the right is treated with synthetic peptide. (Original magnification: x200)



The image on the left is immunohistochemistry of paraffin-embedded Human thyroid cancer tissue using GLI3 Antibody at dilution 1/20, on the right is treated with synthetic peptide. (Original magnification: x200)

Background

This gene encodes a protein which belongs to the C2H2-type zinc finger proteins subclass of the Gli family. They are characterized as DNA-binding transcription factors and are mediators of Sonic hedgehog (Shh) signaling. The protein encoded by this gene localizes in the cytoplasm and activates patched Drosophila homolog (PTCH) gene expression. It is also thought to play a role during embryogenesis. Mutations in this gene have been associated with several diseases, including Greig cephalopolysyndactyly syndrome, Pallister-Hall syndrome, preaxial polydactyly type IV, and postaxial polydactyly types A1 and B.

Note: This product is for in vitro research use only