

AK4 antibody

Catalog No: #22962

Orders: order@signalwayantibody.com

Support: tech@signalwayantibody.com

Description

Product Name	AK4 antibody
Host Species	Rabbit
Clonality	Polyclonal
Purification	Purified by antigen-affinity chromatography.
Applications	WB IHC IF
Species Reactivity	Hu
Immunogen Type	Recombinant protein
Immunogen Description	Recombinant protein fragment contain a sequence corresponding to a region within amino acids 1 and 219 of Human AK3L1
Target Name	AK4
Accession No.	Swiss-Prot:P27144Gene ID:205
Uniprot	P27144
GeneID	205;
Concentration	1mg/ml
Formulation	Supplied in 0.1M Tris-buffered saline with 10% Glycerol (pH7.0). 0.01% Thimerosal was added as a preservative.
Storage	Store at -20°C for long term preservation (recommended). Store at 4°C for short term use.

Application Details

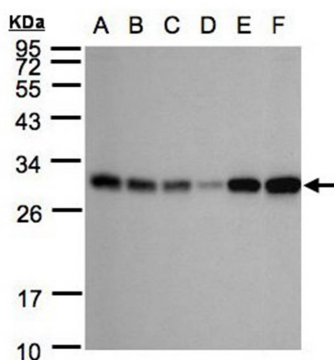
Predicted MW: 25kd

Western blotting: 1:500-1:3000

Immunohistochemistry: 1:100-1:250

Immunofluorescence: 1:100-1:200

Images



Sample(30 ug whole cell lysate)

A: 293T

B: A431

C: H1299

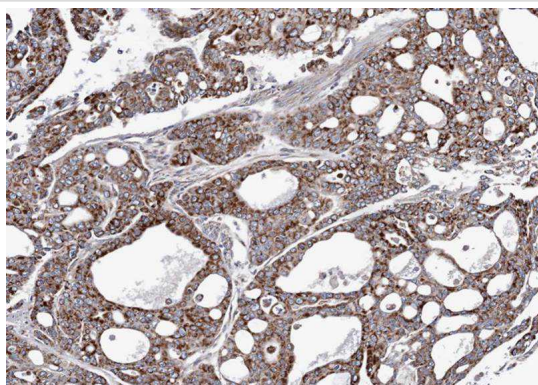
D: HeLa S3

E: Hep G2

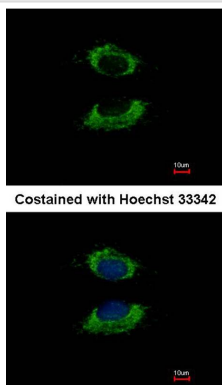
F: Raji

12% SDS PAGE

Primary antibody diluted at 1: 1000



Immunohistochemical analysis of paraffin-embedded gastric cancer N87 xenograft, using AK3L1 antibody at 1: 100 dilution.



Immunofluorescence analysis of methanol-fixed HeLa, using Adenylate kinase 3 antibody at 1: 100 dilution.

Background

This gene encodes a member of the adenylate kinase family of enzymes. The encoded protein is localized to the mitochondrial matrix. Adenylate kinases regulate the adenine and guanine nucleotide compositions within a cell by catalyzing the reversible transfer of phosphate group among these nucleotides. Five isozymes of adenylate kinase have been identified in vertebrates. Expression of these isozymes is tissue-specific and developmentally regulated. A pseudogene for this gene has been located on chromosome 17. Three transcript variants encoding the same protein have been identified for this gene. Sequence alignment suggests that the gene defined by NM_013410, NM_203464, and NM_001005353 is located on chromosome 1. [provided by RefSeq]

Note: This product is for in vitro research use only