

## LIMK1 (Phospho-Ser310) Antibody

Catalog No: #12608

Package Size: #12608-1 50ul #12608-2 100ul

Orders: [order@signalwayantibody.com](mailto:order@signalwayantibody.com)Support: [tech@signalwayantibody.com](mailto:tech@signalwayantibody.com)

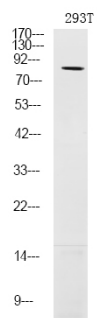
## Description

Product Name	LIMK1 (Phospho-Ser310) Antibody
Host Species	Rabbit
Clonality	Polyclonal
Purification	Antibodies were produced by immunizing rabbits with synthetic phosphopeptide and KLH conjugates. Antibodies were purified by affinity-chromatography using epitope-specific phosphopeptide. Non-phospho specific antibodies were removed by chromatography using non-phosphopeptide.
Applications	WB
Species Reactivity	Hu Ms Rt
Specificity	LIMK1 (Phospho-Ser310) Antibody detects endogenous levels of LIMK1 only when phosphorylated at Ser310
Immunogen Type	Peptide
Immunogen Description	A synthesized peptide derived from human LIMK1 (Phospho-Ser310)
Target Name	LIMK1
Modification	Phospho
Other Names	LIMK1, LIM domain kinase 1, Lim kinase 1, LIMK-1, LIM kinase, LIMK
Accession No.	Swiss-Prot#: P53667NCBI Gene ID: 3984
Uniprot	P53667
GeneID	3984;
Target Species	human
Calculated MW	72kd
Concentration	1.0mg/ml
Formulation	Rabbit IgG in phosphate buffered saline (without Mg2+ and Ca2+), pH 7.4, 150mM NaCl, 0.02% sodium azide and 50% glycerol.
Storage	Store at -20°C

## Application Details

Western blotting: 1:1000

## Images



Western Blot analysis of lysates of 293T cell, using primary antibody at 1:1000 dilution.

Note: This product is for in vitro research use only