

## GATA1(Ab-142) Antibody

Catalog No: #21041

Package Size: #21041-1 50ul #21041-2 100ul

Orders: [order@signalwayantibody.com](mailto:order@signalwayantibody.com)Support: [tech@signalwayantibody.com](mailto:tech@signalwayantibody.com)

## Description

|                       |   |
|-----------------------|---|
| Product Name          | GATA1(Ab-142) Antibody  |
| Host Species          | Rabbit  |
| Clonality             | Polyclonal  |
| Purification          | Antibodies were produced by immunizing rabbits with synthetic peptide and KLH conjugates. Antibodies were purified by affinity-chromatography using epitope-specific peptide. |
| Applications          | WB IHC IF   |
| Species Reactivity    | Hu Ms Rt  |
| Specificity           | The antibody detects endogenous level of total GATA1 protein.   |
| Immunogen Type        | Peptide-KLH   |
| Immunogen Description | Peptide sequence around aa.140~144 (R-L-S-P-D) derived from Human GATA1.  |
| Target Name           | GATA1   |
| Other Names           | GAT1; GATA1; GF-1; NF-E1;   |
| Accession No.         | Swiss-Prot: P15976NCBI Protein: NP_002040.1   |
| Uniprot               | P15976  |
| GeneID                | 2623;   |
| Concentration         | 1.0mg/ml  |
| Formulation           | Supplied at 1.0mg/mL in phosphate buffered saline (without Mg <sup>2+</sup> and Ca <sup>2+</sup> ), pH 7.4, 150mM NaCl, 0.02% sodium azide and 50% glycerol.                  |
| Storage               | Store at -20°C for long term preservation (recommended). Store at 4°C for short term use.   |

## Application Details

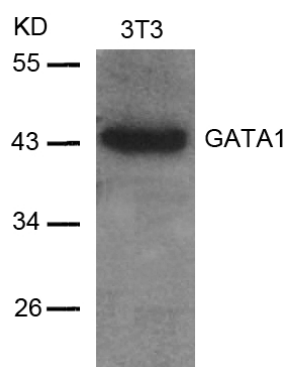
Predicted MW: 43kd

Western blotting: 1:500~1:1000

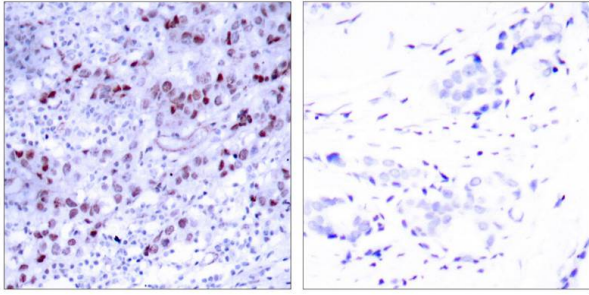
Immunohistochemistry: 1:50~1:100

Immunofluorescence: 1:100~1:200

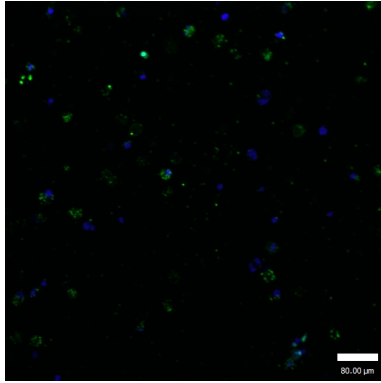
## Images



Western blot analysis of extracts from 3T3 cells using GATA1(Ab-142) Antibody #21041.



Immunohistochemical analysis of paraffin-embedded human breast carcinoma tissue using GATA1(Ab-142) Antibody #21041(left) or the same antibody preincubated with blocking peptide(right).



Immunofluorescence staining of methanol-fixed K562 cells using GATA1 (Ab-142) Antibody #21041.

## Background

GATA1 encodes a protein which belongs to the GATA family of transcription factors. The protein plays an important role in erythroid development by regulating the switch of fetal hemoglobin to adult hemoglobin. Mutations in this gene have been associated with X-linked dyserythropoietic anemia and thrombocytopenia.

Zon LI, et al. (1990) Proc Natl Acad. Sci USA. 87: 668-672.

Trainor C D, et al. (1990) Nature. 343: 92-96.

Nichols K E, et al. (2000) Nat Genet. 24: 266-270.

Freson K, et al. (2001) Blood. 98: 85-92.

Mehaffey M G, et al. (2001) Blood. 98: 2681-2688.

Note: This product is for in vitro research use only