

Rat anti-Mouse CD8, FITC Conjugated mAb

Catalog No: #28261

Orders: order@signalwayantibody.comSupport: tech@signalwayantibody.com

Description

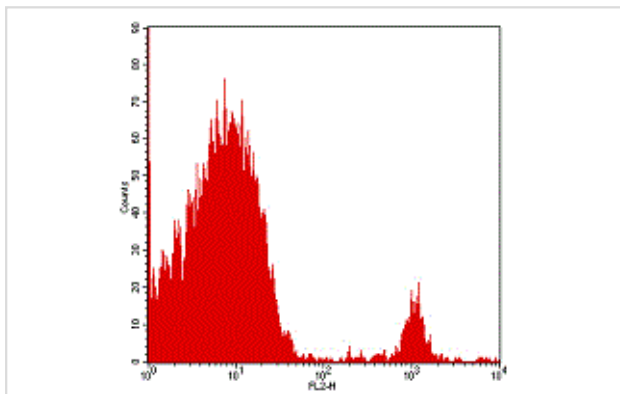
Product Name	Rat anti-Mouse CD8, FITC Conjugated mAb
Host Species	Rat
Clonality	Monoclonal
Clone No.	4AM43
Isotype	IgG2b
Applications	FC
Species Reactivity	Ms
Conjugates	FITC
Target Name	CD8
Formulation	Phosphate-buffered solution, pH 7.4, containing 0.09% sodium azide and 0.2% (w/v) BSA
Storage	Store at 4°C. DO NOT FREEZE. LIGHT SENSITIVE MATERIAL.

Application Details

Vol.per.Test: 10 &mu;l/Test

Notice: This reagent has been pre-diluted for use at recommended volume per test in flow cytometry analysis. Typically add 10ul of this reagent to 100μl of experimental sample with 1 X 10⁶ cells per test. Please refer to the detailed protocol when you perform a test.

Images



Mouse spleen cells analyzed with FITC Rat anti-Mouse CD8 mAb.

Background

The CD8 antigen is a cell surface glycoprotein found on most cytotoxic T lymphocytes that mediates efficient cell-cell interactions within the immune system. The CD8 antigen acts as a corepressor with the T-cell receptor on the T lymphocyte to recognize antigens displayed by an antigen presenting cell (APC) in the context of class I MHC molecules. The coreceptor functions as either a homodimer composed of two alpha chains, or as a heterodimer composed of one alpha and one beta chain. Both alpha and beta chains share significant homology to immunoglobulin variable light chains. This gene encodes the CD8 alpha chain isoforms. Multiple transcript variants encoding different isoforms have been found for this gene.

Note: This product is for in vitro research use only