

## PHB Antibody

Catalog No: #21693

Package Size: #21693-1 50ul #21693-2 100ul

Orders: order@signalwayantibody.com

Support: tech@signalwayantibody.com

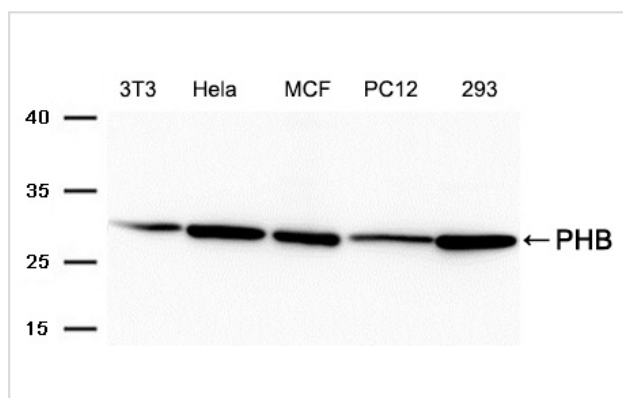
## Description

Product Name	PHB Antibody
Purification	Antibodies were produced by immunizing rabbits with synthetic peptide and KLH conjugates. Antibodies were purified by affinity-chromatography using epitope-specific peptide.
Applications	WB
Species Reactivity	Hu Ms Rt
Specificity	The antibody detects endogenous level of total PHB protein.
Immunogen Type	Peptide-KLH
Immunogen Description	Peptide sequence around aa.256~260 (N-I-T-Y-L) derived from Human PHB.
Other Names	Prohibitin; PHB1
Accession No.	Swiss-Prot: P35232NCBI Protein: NP_001268425.1
Uniprot	P35232
GeneID	5245;
SDS-PAGE MW	29kd
Concentration	1.0mg/ml
Formulation	Supplied at 1.0mg/mL in phosphate buffered saline (without Mg <sup>2+</sup> and Ca <sup>2+</sup> ), pH 7.4, 150mM NaCl, 0.02% sodium azide and 50% glycerol.
Storage	Store at -20°C

## Application Details

Western blotting: 1:5000½ 1:1000

## Images



Western blot analysis of extracts from 3T3, HeLa, MCF, PC12 and 293 cells using PHB Antibody #21693.

## Background

Prohibitin inhibits DNA synthesis. It has a role in regulating proliferation. As yet it is unclear if the protein or the mRNA exhibits this effect. May play a role in regulating mitochondrial respiration activity and in aging.

Day ME et al. Isoform-specific targeting of PKA to multivesicular bodies. J Cell Biol 193:347-63 (2011)

Xiang F et al. Proteomic analysis of myocardial tissue from the border zone during early stage post-infarct remodelling in rats. Eur J Heart Fail 13:254-63 (2011)

---

Note: This product is for in vitro research use only