

## EPO Antibody

Catalog No: #32958

Package Size: #32958-1 50ul #32958-2 100ul

Orders: [order@signalwayantibody.com](mailto:order@signalwayantibody.com)Support: [tech@signalwayantibody.com](mailto:tech@signalwayantibody.com)

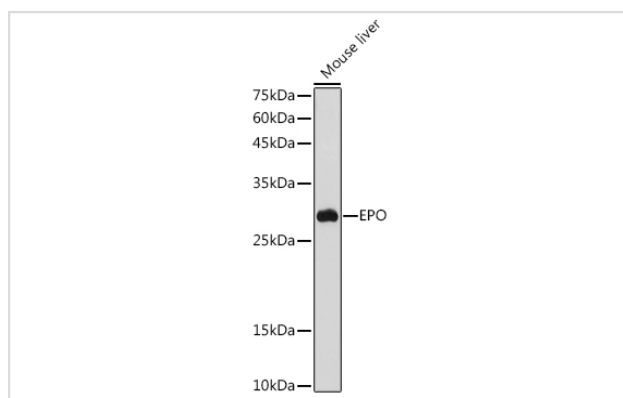
## Description

Product Name	EPO Antibody
Host Species	Rabbit
Clonality	Polyclonal
Isotype	IgG
Purification	Affinity purification
Applications	WB,IHC
Species Reactivity	Human,Mouse,Rat
Specificity	The antibody detects endogenous level of total EPO protein.
Immunogen Type	Recombinant Protein
Immunogen Description	A synthetic peptide of human EPO
Target Name	EPO
Other Names	EPO;EP;MVCD2
Accession No.	Uniprot:P01588GeneID:2056
Uniprot	P01588
GeneID	2056
SDS-PAGE MW	26KDa
Concentration	1.0mg/ml
Formulation	PBS with 0.02% sodium azide,50% glycerol,pH7.3.
Storage	Store at -20°C. Avoid freeze / thaw cycles.

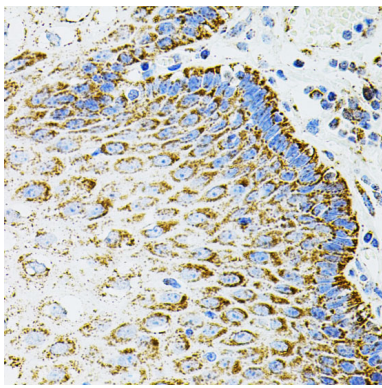
## Application Details

WB□1:500 - 1:2000IHC□1:100 - 1:200

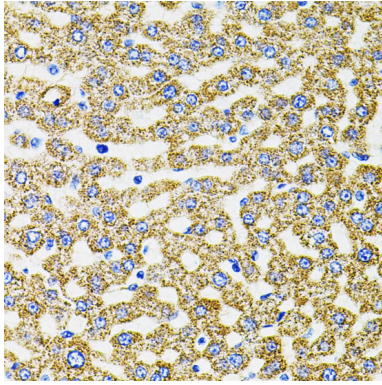
## Images



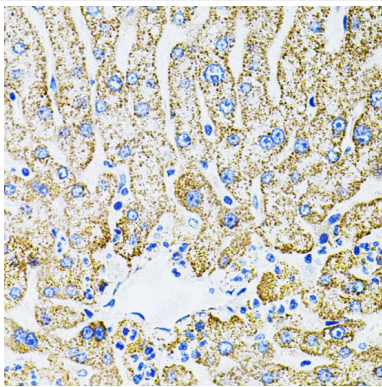
Western blot analysis of extracts of Mouse liver, using EPO antibody.



Immunohistochemistry of paraffin-embedded human esophagus using EPO antibody.



Immunohistochemistry of paraffin-embedded rat liver using EPO antibody.



Immunohistochemistry of paraffin-embedded human liver damage using EPO antibody.

## Background

This gene is a member of the EPO/TPO family and encodes a secreted, glycosylated cytokine composed of four alpha helical bundles. The protein is found in the plasma and regulates red cell production by promoting erythroid differentiation and initiating hemoglobin synthesis. This protein also has neuroprotective activity against a variety of potential brain injuries and antiapoptotic functions in several tissue types.

Note: This product is for in vitro research use only