

BRE antibody

Catalog No: #22004



Orders: order@signalwayantibody.com
Support: tech@signalwayantibody.com

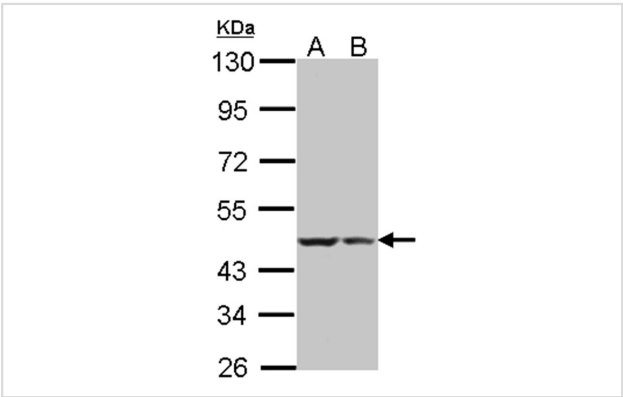
Description

Product Name	BRE antibody
Host Species	Rabbit
Clonality	Polyclonal
Purification	Purified by antigen-affinity chromatography.
Applications	WB IHC IF
Species Reactivity	Hu Ms
Immunogen Type	Recombinant protein
Immunogen Description	Recombinant protein fragment contain a sequence corresponding to a region within amino acids 9 and 338 of BRE
Target Name	BRE
Accession No.	Swiss-Prot:Q9NXR7Gene ID:9577
Uniprot	Q9NXR7
GeneID	9577;
Concentration	1mg/ml
Formulation	Supplied in 0.1M Tris-buffered saline with 10% Glycerol (pH7.0). 0.01% Thimerosal was added as a preservative.
Storage	Store at -20°C for long term preservation (recommended). Store at 4°C for short term use.

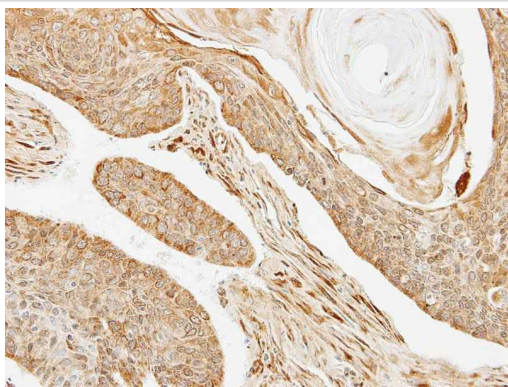
Application Details

Predicted MW: 47kd
Western blotting: 1:500-1:3000
Immunohistochemistry: 1:100-1:250
Immunofluorescence: 1:100-1:200

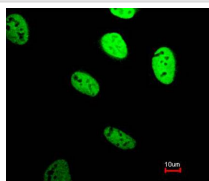
Images



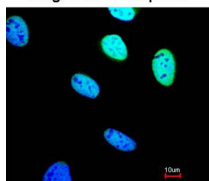
Sample(30 ug of whole cell lysate)
A: HeLa S3
B: Hep G2
7.5% SDS PAGE
Primary antibody diluted at 1: 500



Immunohistochemical analysis of paraffin-embedded SCC4 xenograft, using BRE antibody at 1: 100 dilution.



Merged with DNA probe



Immunofluorescence analysis of paraformaldehyde-fixed HeLa, using BRE antibody at 1: 200 dilution.

Note: This product is for in vitro research use only