

## TUBB3 Antibody

Catalog No: #35539

Orders: [order@signalwayantibody.com](mailto:order@signalwayantibody.com)Support: [tech@signalwayantibody.com](mailto:tech@signalwayantibody.com)

## Description

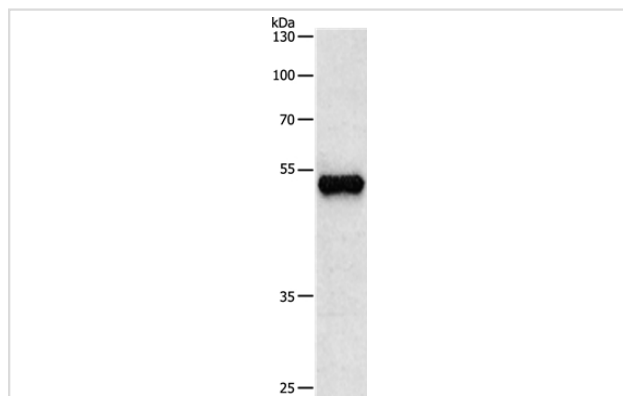
Product Name	TUBB3 Antibody
Host Species	Rabbit
Clonality	Polyclonal
Purification	Antigen affinity purification.
Applications	WB IHC
Species Reactivity	Hu Ms Rt
Specificity	The antibody detects endogenous levels of total TUBB3 protein.
Immunogen Type	Recombinant Protein
Immunogen Description	Fusion protein corresponding to a region derived from internal residues of human Tubulin beta-3 chain
Target Name	TUBB3
Other Names	TUBB4
Accession No.	Swiss-Prot#: Q13509NCBI Gene ID: 10381Gene Accssion: BC000748
Uniprot	Q13509
GeneID	10381;
SDS-PAGE MW	50kd
Concentration	0.5mg/ml
Formulation	Rabbit IgG in pH7.4 PBS, 0.05% NaN <sub>3</sub> , 40% Glycerol.
Storage	Store at -20°C

## Application Details

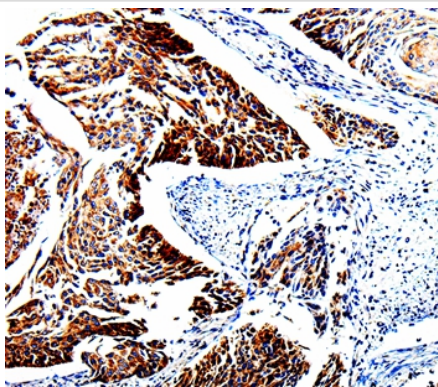
Western blotting: 1:500-1:1000

Immunohistochemistry: 1:25-1:50

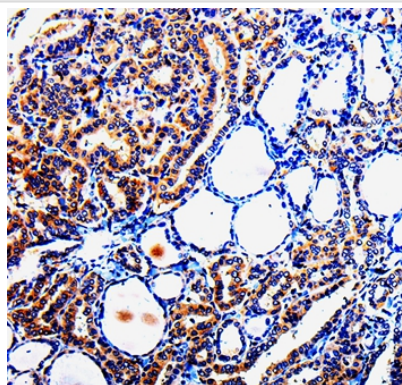
## Images



Gel: 8%SDS-PAGE  
Lysate:30ug Human brain glioma tissue  
Primary antibody: 1/500 dilution  
Secondary antibody dilution: 1/8000  
Exposure time: 10 seconds



Immunohistochemical analysis of paraffin-embedded Human cervical cancer tissue using #35539 at dilution 1/25.



Immunohistochemical analysis of paraffin-embedded Human thyroid cancer tissue using #35539 at dilution 1/25.

## Background

his gene encodes a class III member of the beta tubulin protein family. Beta tubulins are one of two core protein families (alpha and beta tubulins) that heterodimerize and assemble to form microtubules. This protein is primarily expressed in neurons and may be involved in neurogenesis and axon guidance and maintenance. Mutations in this gene are the cause of congenital fibrosis of the extraocular muscles type 3. Alternate splicing results in multiple transcript variants. A pseudogene of this gene is found on chromosome 6

Note: This product is for in vitro research use only