

## C3AR1 Antibody

Catalog No: #36294

Orders: [order@signalwayantibody.com](mailto:order@signalwayantibody.com)Support: [tech@signalwayantibody.com](mailto:tech@signalwayantibody.com)

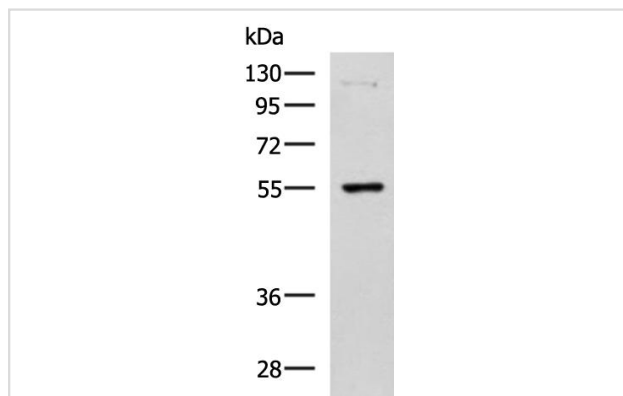
## Description

Product Name	C3AR1 Antibody
Host Species	Rabbit
Clonality	Polyclonal
Purification	Antigen affinity purification.
Applications	WB
Species Reactivity	Hu
Specificity	The antibody detects endogenous levels of total C3AR1 protein.
Immunogen Type	Recombinant Protein
Immunogen Description	Fusion protein corresponding to a region derived from internal residues of human complement component 3a receptor 1
Target Name	C3AR1
Other Names	AZ3B; C3AR; HNFAG09
Accession No.	Swiss-Prot#: Q16581NCBI Gene ID: 719Gene Accssion: BC020742
Uniprot	Q16581
GeneID	719;
SDS-PAGE MW	54kd
Concentration	1mg/ml
Formulation	Rabbit IgG in pH7.4 PBS, 0.05% NaN <sub>3</sub> , 40% Glycerol.
Storage	Store at -20°C

## Application Details

Western blotting: 1:200-1:1000

## Images



Gel: 8%SDS-PAGE

Lysate: 40  $\times$  Og

Lane : 293T cell lysates

Primary antibody: 36294(C3AR1 Antibody) at dilution 1/1000

Secondary antibody: Goat anti rabbit IgG at 1/5000 dilution

Exposure time: 1 minute

## Background

The C3a receptor also known as complement component 3a receptor 1 (C3AR1) is a G protein-coupled receptorprotein involved in the complement

system. Receptor for the chemotactic and inflammatory peptide anaphylatoxin C3a. This receptor stimulates chemotaxis, granule enzyme release and superoxide anion production. Widely expressed in several differentiated hematopoietic cell lines, in the lung, spleen, ovary, placenta, small intestine, throughout the brain, heart, and endothelial cells. Mostly expressed in lymphoid tissues.

---

Note: This product is for in vitro research use only