

SLC7A5 Antibody

Catalog No: #36754

Orders: order@signalwayantibody.comSupport: tech@signalwayantibody.com

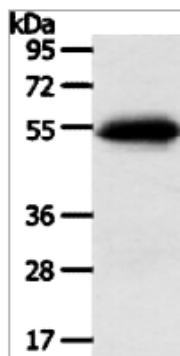
Description

Product Name	SLC7A5 Antibody
Host Species	Rabbit
Clonality	Polyclonal
Purification	Antigen affinity purification.
Applications	WB
Species Reactivity	Hu
Specificity	The antibody detects endogenous levels of total SLC7A5 protein.
Immunogen Type	Peptide
Immunogen Description	Synthetic peptide corresponding to a region derived from internal residues of human Solute carrier family 7 member 5
Target Name	SLC7A5
Other Names	E16; CD98; LAT1; 4F2LC; MPE16; hLAT1
Accession No.	Swiss-Prot#: Q01650NCBI Gene ID: 8140Gene Accssion: NP_003477
Uniprot	Q01650
GeneID	8140;
SDS-PAGE MW	55kd
Concentration	0.4mg/ml
Formulation	Rabbit IgG in pH7.4 PBS, 0.05% NaN ₃ , 40% Glycerol.
Storage	Store at -20°C

Application Details

Western blotting: 1:100-1:500

Images



Gel: 8%SDS-PAGE, Lysate: 40 μ g, Lane: 823 cells, Primary antibody: SLC7A5 Antibody at dilution 1/250, Secondary antibody: Goat anti rabbit IgG at 1/8000 dilution, Exposure time: 2 minutes

Background

Solute carrier family 7 member 5 also known as large neutral amino acids transporter small subunit 1 is a protein that in humans is encoded by the

SLC7A5 gene. It is sodium-independent, high-affinity transport of large neutral amino acids such as phenylalanine, tyrosine, leucine, arginine and tryptophan, when associated with SLC3A2/4F2hc. It involved in cellular amino acid uptake and the transport of L-DOPA across the blood-brain barrier, and that of thyroid hormones triiodothyronine (T3) and thyroxine (T4) across the cell membrane in tissues such as placenta. Acts as an amino acid exchanger and plays a role in neuronal cell proliferation (neurogenesis) in brain.

Note: This product is for in vitro research use only