

ADRA1B Antibody

Catalog No: #36762

Orders: order@signalwayantibody.comSupport: tech@signalwayantibody.com

Description

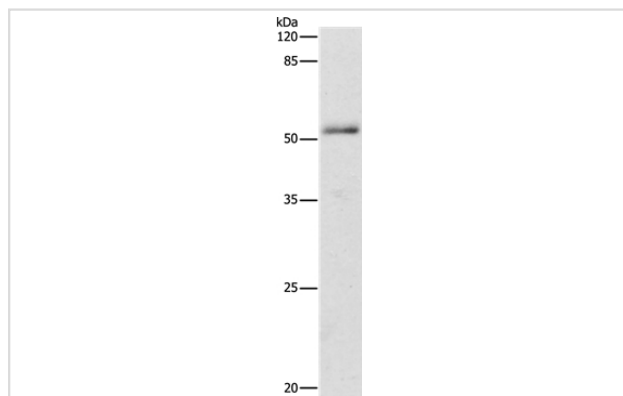
Product Name	ADRA1B Antibody
Host Species	Rabbit
Clonality	Polyclonal
Purification	Antigen affinity purification.
Applications	WB IHC
Species Reactivity	Hu
Specificity	The antibody detects endogenous levels of total ADRA1B protein.
Immunogen Type	Peptide
Immunogen Description	Synthetic peptide corresponding to residues near the C terminal of human Alpha-1B adrenergic receptor
Target Name	ADRA1B
Other Names	ADRA1; ALPHA1BAR
Accession No.	Swiss-Prot#: P35368NCBI Gene ID: 147Gene Accssion: NM_000679
Uniprot	P35368
GeneID	147;
SDS-PAGE MW	57kd
Concentration	1.1mg/ml
Formulation	Rabbit IgG in pH7.4 PBS, 0.05% NaN ₃ , 40% Glycerol.
Storage	Store at -20°C

Application Details

Western blotting: 1:200-1:1000

Immunohistochemistry: 1:25-1:100

Images



Gel: 10%SDS-PAGE

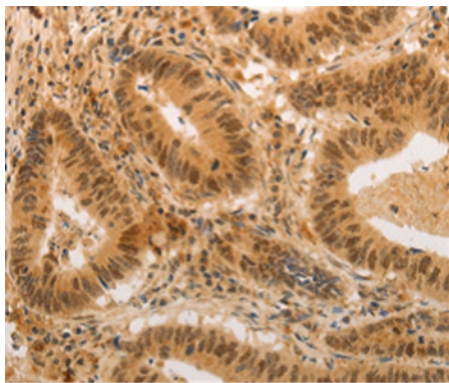
Lysates (from left to right): Human lung cancer tissue

Amount of lysate: 40ug per lane

Primary antibody: 1/550 dilution

Secondary antibody dilution: 1/8000

Exposure time: 1 minute



Immunohistochemical analysis of paraffin-embedded Human colon cancer tissue using #36762 at dilution 1/20.

Background

Alpha-1-adrenergic receptors (alpha-1-ARs) are members of the G protein-coupled receptor superfamily. They activate mitogenic responses and regulate growth and proliferation of many cells. There are 3 alpha-1-AR subtypes: alpha-1A, -1B and -1D, all of which signal through the Gq/11 family of G-proteins and different subtypes show different patterns of activation. This gene encodes alpha-1B-adrenergic receptor, which induces neoplastic transformation when transfected into NIH 3T3 fibroblasts and other cell lines. Thus, this normal cellular gene is identified as a protooncogene. This gene comprises 2 exons and a single large intron of at least 20 kb that interrupts the coding region.

Note: This product is for in vitro research use only