

XE7 antibody

Catalog No: #22155

Orders: order@signalwayantibody.comSupport: tech@signalwayantibody.com

Description

Product Name	XE7 antibody
Host Species	Rabbit
Clonality	Polyclonal
Purification	Purified by antigen-affinity chromatography.
Applications	WB IHC
Species Reactivity	Hu
Immunogen Type	Recombinant protein
Immunogen Description	Recombinant protein fragment contain a sequence corresponding to a region within amino acids 473 and 630 of Human SFRS17A
Target Name	XE7
Other Names	721P; DXYS155E; MGC125365; MGC125366; MGC39904; XE7; XE7Y
Accession No.	Swiss-Prot:Q02040Gene ID:8227
Uniprot	Q02040
GeneID	8227;
Concentration	1mg/ml
Formulation	Supplied in 0.1M Tris-buffered saline with 10% Glycerol (pH7.0). 0.01% Thimerosal was added as a preservative.
Storage	Store at -20°C for long term preservation (recommended). Store at 4°C for short term use.

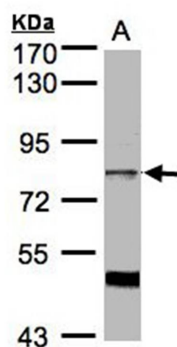
Application Details

Predicted MW: 81kd

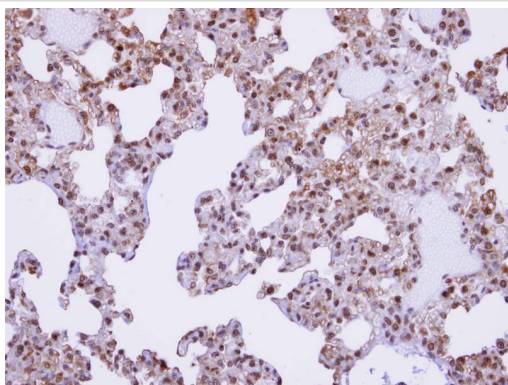
Western blotting: 1:500-1:3000

Immunohistochemistry: 1:100-1:250

Images



Sample (30ug whole cell lysate)
A: HeLa S3
7.5% SDS PAGE
Primary antibody diluted at 1: 1000



Immunohistochemical analysis of paraffin-embedded lung, using XE7 antibody at 1: 100 dilution.

Background

This locus encodes a protein kinase A anchoring protein. The encoded protein is part of the spliceosome complex and is involved in the regulation of alternate splicing in some mRNA precursors. Alternatively spliced transcript variants have been identified for this gene.

Note: This product is for in vitro research use only