

## CMTM1 Antibody

Catalog No: #36796

Orders: [order@signalwayantibody.com](mailto:order@signalwayantibody.com)Support: [tech@signalwayantibody.com](mailto:tech@signalwayantibody.com)

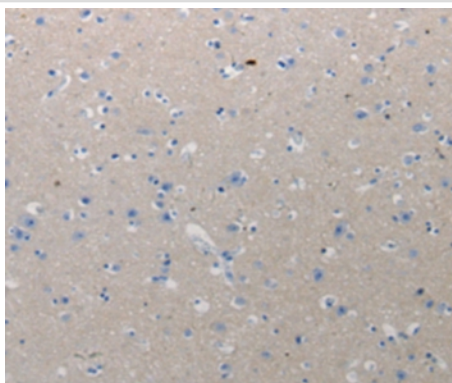
## Description

|                       |   |
|-----------------------|---|
| Product Name          | CMTM1 Antibody  |
| Host Species          | Rabbit  |
| Clonality             | Polyclonal  |
| Purification          | Antigen affinity purification.  |
| Applications          | IHC   |
| Species Reactivity    | Hu  |
| Specificity           | The antibody detects endogenous levels of total CMTM1 protein.  |
| Immunogen Type        | Peptide   |
| Immunogen Description | Synthetic peptide corresponding to residues near the C terminal of human CKLF-like MARVEL transmembrane domain-containing protein 1 |
| Target Name           | CMTM1   |
| Other Names           | CKLFH; CKLFH1; CKLFSF1  |
| Accession No.         | Swiss-Prot#: Q8IZ96NCBI Gene ID: 113540Gene Accssion: NP_443725   |
| Uniprot               | Q8IZ96  |
| GeneID                | 113540;   |
| Concentration         | 0.3mg/ml  |
| Formulation           | Rabbit IgG in pH7.4 PBS, 0.05% NaN <sub>3</sub> , 40% Glycerol.   |
| Storage               | Store at -20°C  |

## Application Details

Immunohistochemistry: 1:10-1:100

## Images



Immunohistochemical analysis of paraffin-embedded Human urinary bladder tissue using #36796 at dilution 1/10.

## Background

This gene belongs to the chemokine-like factor gene superfamily, a novel family that is similar to the chemokine and the transmembrane 4 superfamilies of signaling molecules. The protein encoded by this gene may play an important role in testicular development. Alternatively spliced

transcript variants encoding different isoforms have been identified. Naturally occurring read-through transcription occurs between this locus and the neighboring locus CKLF (chemokine-like factor).

---

Note: This product is for in vitro research use only