

## CXCR1 Antibody

Catalog No: #36814

Orders: [order@signalwayantibody.com](mailto:order@signalwayantibody.com)Support: [tech@signalwayantibody.com](mailto:tech@signalwayantibody.com)

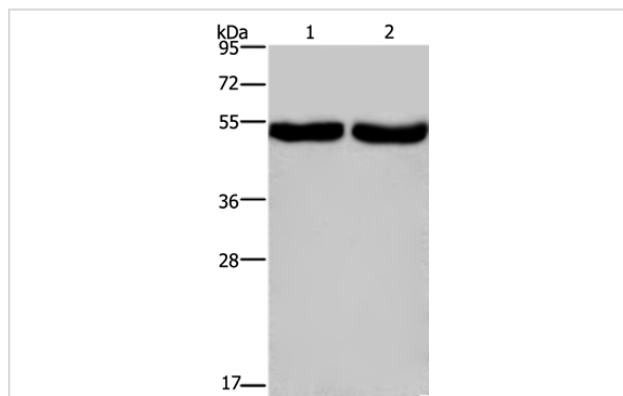
## Description

Product Name	CXCR1 Antibody
Host Species	Rabbit
Clonality	Polyclonal
Purification	Antigen affinity purification.
Applications	WB
Species Reactivity	Hu
Specificity	The antibody detects endogenous levels of total CXCR1 protein.
Immunogen Type	Peptide
Immunogen Description	Synthetic peptide corresponding to a region derived from internal residues of human chemokine (C-X-C motif) receptor 1
Target Name	CXCR1
Other Names	C-C; CD128; CD181; CKR-1; IL8R1; IL8RA; CMKAR1; IL8RBA; CDw128a; C-C-CKR-1
Accession No.	Swiss-Prot#: P25024NCBI Gene ID: 3577Gene Accssion: NP_000625
Uniprot	P25024
GeneID	3577;
SDS-PAGE MW	40kd
Concentration	2.6mg/ml
Formulation	Rabbit IgG in pH7.4 PBS, 0.05% NaN <sub>3</sub> , 40% Glycerol.
Storage	Store at -20°C

## Application Details

Western blotting: 1:200-1:1000

## Images



Gel: 8%SDS-PAGE

Lysates (from left to right): Human colon cancer and placenta tissue

Amount of lysate: 40ug per lane

Primary antibody: 1/200 dilution

Secondary antibody dilution: 1/8000

Exposure time: 2 minutes

## Background

The protein encoded by this gene is a member of the G-protein-coupled receptor family. This protein is a receptor for interleukin 8 (IL8). It binds to IL8

with high affinity, and transduces the signal through a G-protein activated second messenger system. Knockout studies in mice suggested that this protein inhibits embryonic oligodendrocyte precursor migration in developing spinal cord. This gene, IL8RB, a gene encoding another high affinity IL8 receptor, as well as IL8RBP, a pseudogene of IL8RB, form a gene cluster in a region mapped to chromosome 2q33-q36.

---

Note: This product is for in vitro research use only