

CCND3 Antibody

Catalog No: #36819

Orders: order@signalwayantibody.comSupport: tech@signalwayantibody.com

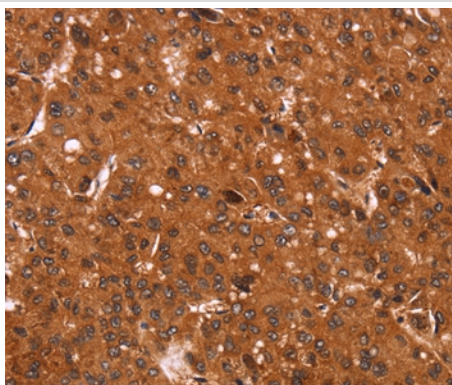
Description

Product Name	CCND3 Antibody
Host Species	Rabbit
Clonality	Polyclonal
Purification	Antigen affinity purification.
Applications	IHC
Species Reactivity	Hu
Specificity	The antibody detects endogenous levels of total CCND3 protein.
Immunogen Type	Peptide
Immunogen Description	Synthetic peptide corresponding to residues near the C terminal of human cyclin D3
Target Name	CCND3
Other Names	CCND3; cyclin D3; D3-type cyclin; G1/S-specific cyclin D3; G1/S-specific cyclin-D3
Accession No.	Swiss-Prot#: P30281NCBI Gene ID: 896Gene Accssion: NP_001751
Uniprot	P30281
GeneID	896;
Concentration	2.8mg/ml
Formulation	Rabbit IgG in pH7.4 PBS, 0.05% NaN ₃ , 40% Glycerol.
Storage	Store at -20°C

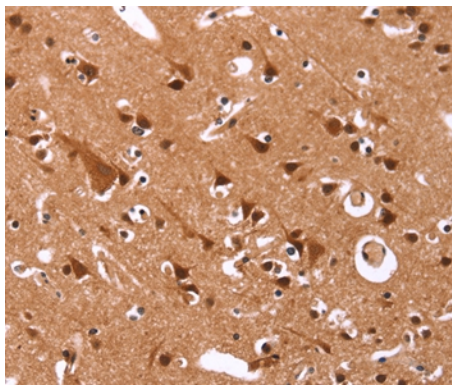
Application Details

Immunohistochemistry: 1:50-1:200

Images



Immunohistochemical analysis of paraffin-embedded Human liver cancer tissue using #36819 at dilution 1/40.



Immunohistochemical analysis of paraffin-embedded Human brain tissue using #36819 at dilution 1/40.

Background

The protein encoded by this gene belongs to the highly conserved cyclin family, whose members are characterized by a dramatic periodicity in protein abundance through the cell cycle. Cyclins function as regulators of CDK kinases. Different cyclins exhibit distinct expression and degradation patterns which contribute to the temporal coordination of each mitotic event. This cyclin forms a complex with and functions as a regulatory subunit of CDK4 or CDK6, whose activity is required for cell cycle G1/S transition. This protein has been shown to interact with and be involved in the phosphorylation of tumor suppressor protein Rb.

Note: This product is for in vitro research use only