

## EPHA1 Antibody

Catalog No: #36844

Orders: [order@signalwayantibody.com](mailto:order@signalwayantibody.com)Support: [tech@signalwayantibody.com](mailto:tech@signalwayantibody.com)

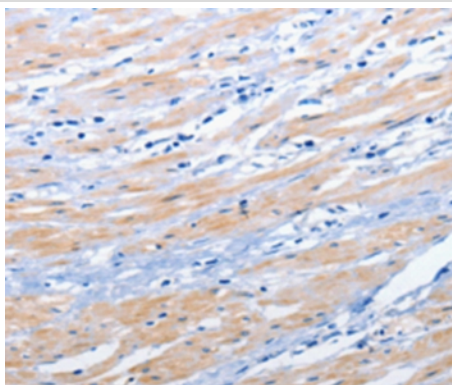
## Description

|                       |  |
|-----------------------|--|
| Product Name          | EPHA1 Antibody   |
| Host Species          | Rabbit   |
| Clonality             | Polyclonal   |
| Purification          | Antigen affinity purification.   |
| Applications          | IHC  |
| Species Reactivity    | Hu   |
| Specificity           | The antibody detects endogenous levels of total EPHA1 protein.   |
| Immunogen Type        | Peptide  |
| Immunogen Description | Synthetic peptide corresponding to a region derived from internal residues of human Ephrin type-A receptor 1 |
| Target Name           | EPHA1  |
| Other Names           | EPH; EPHT; EPHT1   |
| Accession No.         | Swiss-Prot#: P21709NCBI Gene ID: 2041Gene Accssion: NP_005223  |
| Uniprot               | P21709   |
| GeneID                | 2041;  |
| Concentration         | 0.8mg/ml   |
| Formulation           | Rabbit IgG in pH7.4 PBS, 0.05% NaN <sub>3</sub> , 40% Glycerol.  |
| Storage               | Store at -20°C   |

## Application Details

Immunohistochemistry: 1:10-1:50

## Images



Immunohistochemical analysis of paraffin-embedded Human colon cancer tissue using #36844 at dilution 1/25.

## Background

This gene belongs to the ephrin receptor subfamily of the protein-tyrosine kinase family. EPH and EPH-related receptors have been implicated in mediating developmental events, particularly in the nervous system. Receptors in the EPH subfamily typically have a single kinase domain and an extracellular region containing a Cys-rich domain and 2 fibronectin type III repeats. The ephrin receptors are divided into 2 groups based on the similarity of their extracellular domain sequences and their affinities for binding ephrin-A and ephrin-B ligands. This gene is expressed in some human

cancer cell lines and has been implicated in carcinogenesis.

---

Note: This product is for in vitro research use only