

MAPK6 Antibody

Catalog No: #36847

Orders: order@signalwayantibody.comSupport: tech@signalwayantibody.com

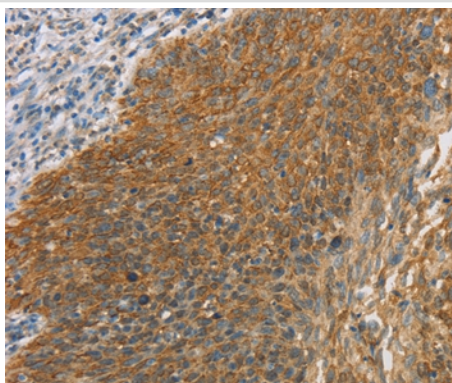
Description

Product Name	MAPK6 Antibody
Host Species	Rabbit
Clonality	Polyclonal
Purification	Antigen affinity purification.
Applications	IHC
Species Reactivity	Hu Ms Rt
Specificity	The antibody detects endogenous levels of total MAPK6 protein.
Immunogen Type	Peptide
Immunogen Description	Synthetic peptide corresponding to a region derived from internal residues of human mitogen-activated protein kinase 6
Target Name	MAPK6
Other Names	ERK3; PRKM6; p97MAPK; HsT17250
Accession No.	Swiss-Prot#: Q16659NCBI Gene ID: 5597Gene Accssion: NP_002739
Uniprot	Q16659
GeneID	5597;
Concentration	2.7mg/ml
Formulation	Rabbit IgG in pH7.4 PBS, 0.05% NaN ₃ , 40% Glycerol.
Storage	Store at -20°C

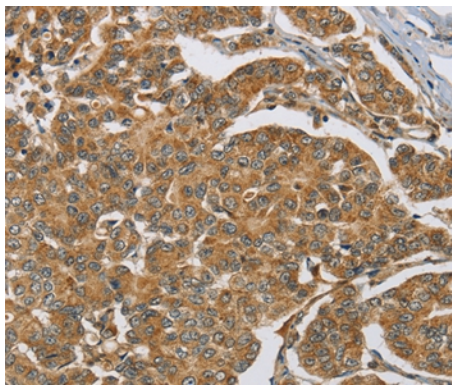
Application Details

Immunohistochemistry: 1:50-1:200

Images



Immunohistochemical analysis of paraffin-embedded Human cervical cancer tissue using #36847 at dilution 1/40.



Immunohistochemical analysis of paraffin-embedded Human breast cancer tissue using #36847 at dilution 1/40.

Background

The protein encoded by this gene is a member of the Ser/Thr protein kinase family, and is most closely related to mitogen-activated protein kinases (MAP kinases). MAP kinases also known as extracellular signal-regulated kinases (ERKs), are activated through protein phosphorylation cascades and act as integration points for multiple biochemical signals. This kinase is localized in the nucleus, and has been reported to be activated in fibroblasts upon treatment with serum or phorbol esters.

Note: This product is for in vitro research use only