

## FBLN1 Antibody

Catalog No: #36852

Orders: [order@signalwayantibody.com](mailto:order@signalwayantibody.com)Support: [tech@signalwayantibody.com](mailto:tech@signalwayantibody.com)

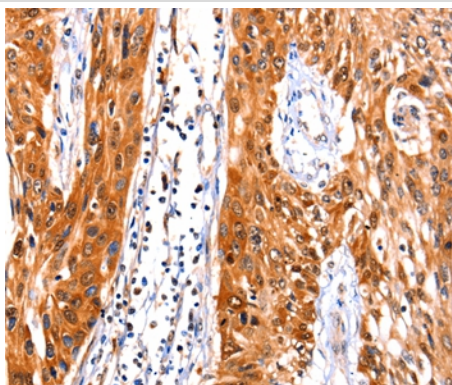
## Description

Product Name	FBLN1 Antibody
Host Species	Rabbit
Clonality	Polyclonal
Purification	Antigen affinity purification.
Applications	IHC
Species Reactivity	Hu
Specificity	The antibody detects endogenous levels of total FBLN1 protein.
Immunogen Type	Peptide
Immunogen Description	Synthetic peptide corresponding to a region derived from internal residues of human fibulin 1
Target Name	FBLN1
Other Names	FBLN; FIBL1
Accession No.	Swiss-Prot#: P23142NCBI Gene ID: 2192Gene Accssion: NP_001987
Uniprot	P23142
GeneID	2192;
Concentration	1.9mg/ml
Formulation	Rabbit IgG in pH7.4 PBS, 0.05% NaN <sub>3</sub> , 40% Glycerol.
Storage	Store at -20°C

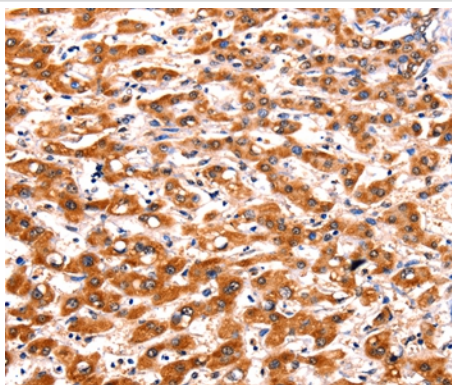
## Application Details

Immunohistochemistry: 1:100-1:300

## Images



Immunohistochemical analysis of paraffin-embedded Human esophagus cancer tissue using #36852 at dilution 1/47.



Immunohistochemical analysis of paraffin-embedded Human liver cancer tissue using #36852 at dilution 1/47.

## Background

Fibulin 1 is a secreted glycoprotein that becomes incorporated into a fibrillar extracellular matrix. Calcium-binding is apparently required to mediate its binding to laminin and nidogen. It mediates platelet adhesion via binding fibrinogen. Four splice variants which differ in the 3' end have been identified. Each variant encodes a different isoform, but no functional distinctions have been identified among the four variants.

Note: This product is for in vitro research use only