

SEC13 protein isoform 1 antibody

Catalog No: #22162



Orders: order@signalwayantibody.com
Support: tech@signalwayantibody.com

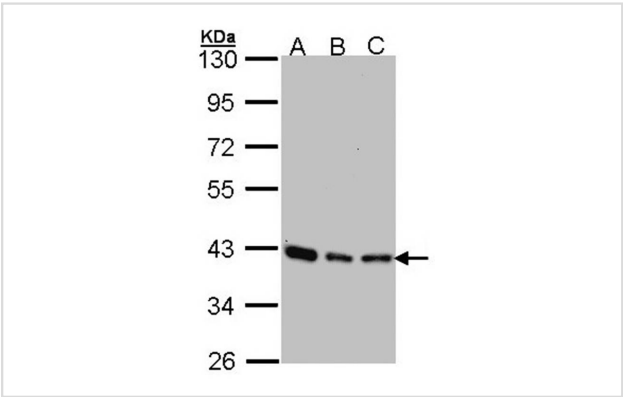
Description

Product Name	SEC13 protein isoform 1 antibody
Host Species	Rabbit
Clonality	Polyclonal
Purification	Purified by antigen-affinity chromatography.
Applications	WB IHC
Species Reactivity	Hu
Immunogen Type	Recombinant protein
Immunogen Description	Recombinant protein fragment contain a sequence corresponding to a region within amino acids 1 and 289 of Human SEC13
Target Name	SEC13 protein isoform 1
Accession No.	Swiss-Prot:P55735Gene ID:6396
Uniprot	P55735
GeneID	6396;
Concentration	1mg/ml
Formulation	Supplied in 0.1M Tris-buffered saline with 10% Glycerol (pH7.0). 0.01% Thimerosal was added as a preservative.
Storage	Store at -20°C for long term preservation (recommended). Store at 4°C for short term use.

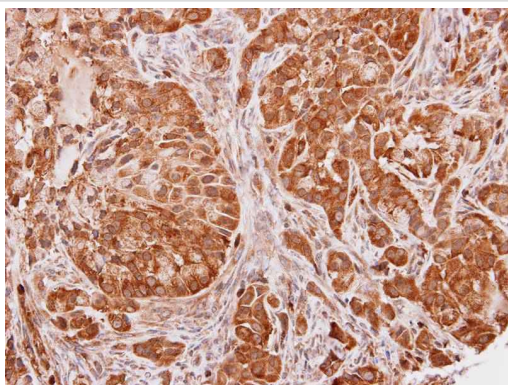
Application Details

Predicted MW: 36kd
Western blotting: 1:500-1:3000
Immunohistochemistry: 1:100-1:250

Images



Sample (30 ug of whole cell lysate)
A: 293T
B: A431
C: H1299
10% SDS PAGE
Primary antibody diluted at 1: 1000



Immunohistochemical analysis of paraffin-embedded A549 xenograft, using SEC13L1 antibody at 1: 100 dilution.

Background

The protein encoded by this gene belongs to the SEC13 family of WD-repeat proteins. It is a constituent of the endoplasmic reticulum and the nuclear pore complex. It has similarity to the yeast SEC13 protein, which is required for vesicle biogenesis from endoplasmic reticulum during the transport of proteins. Multiple alternatively spliced transcript variants have been found. [provided by RefSeq]

Note: This product is for in vitro research use only