

FOXA1 Antibody

Catalog No: #36860



Orders: [order@signalwayantibody.com](mailto:order@signalwayantibody.com)  
Support: [tech@signalwayantibody.com](mailto:tech@signalwayantibody.com)

Description

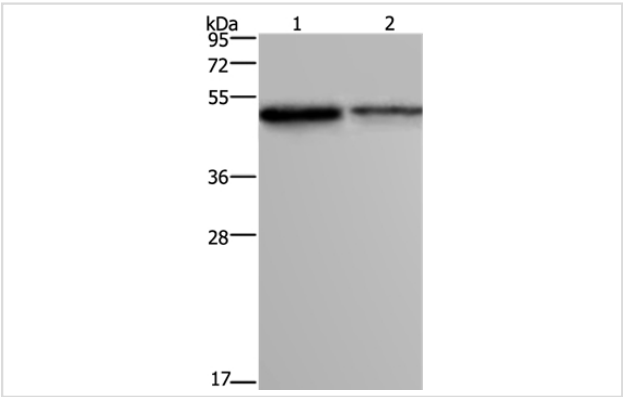
Product Name	FOXA1 Antibody
Host Species	Rabbit
Clonality	Polyclonal
Purification	Antigen affinity purification.
Applications	WB IHC
Species Reactivity	Hu
Specificity	The antibody detects endogenous levels of total FOXA1 protein.
Immunogen Type	Peptide
Immunogen Description	Synthetic peptide corresponding to a region derived from internal residues of human forkhead box A1
Target Name	FOXA1
Other Names	HNF3A; TCF3A
Accession No.	Swiss-Prot#: P55317NCBI Gene ID: 3169Gene Accssion: NP_004487
Uniprot	P55317
GeneID	3169;
SDS-PAGE MW	49kd
Concentration	3.3mg/ml
Formulation	Rabbit IgG in pH7.4 PBS, 0.05% NaN3, 40% Glycerol.
Storage	Store at -20°C

Application Details

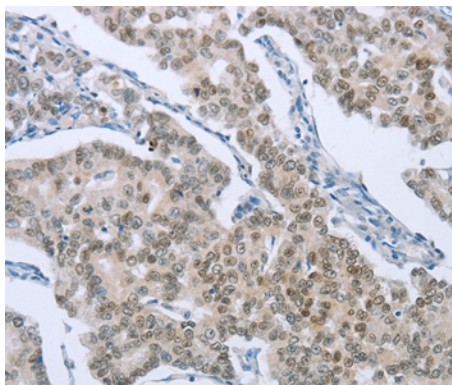
Western blotting: 1:200-1:1000

Immunohistochemistry: 1:50-1:200

Images



Gel: 8%SDS-PAGE  
Lysates (from left to right): Human prostate tissue and MCF-7 cell  
Amount of lysate: 40ug per lane  
Primary antibody: 1/300 dilution  
Secondary antibody dilution: 1/8000  
Exposure time: 5 minutes



Immunohistochemical analysis of paraffin-embedded Human breast cancer tissue using #36860 at dilution 1/50.

## Background

This gene encodes a member of the forkhead class of DNA-binding proteins. These hepatocyte nuclear factors are transcriptional activators for liver-specific transcripts such as albumin and transthyretin, and they also interact with chromatin. Similar family members in mice have roles in the regulation of metabolism and in the differentiation of the pancreas and liver.

Note: This product is for in vitro research use only