

CCKAR Antibody

Catalog No: #36882

Orders: order@signalwayantibody.comSupport: tech@signalwayantibody.com

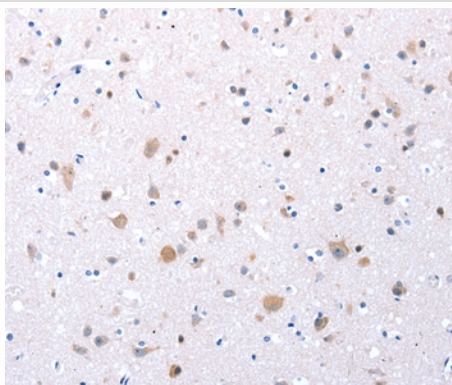
Description

Product Name	CCKAR Antibody
Host Species	Rabbit
Clonality	Polyclonal
Purification	Antigen affinity purification.
Applications	IHC
Species Reactivity	Hu
Specificity	The antibody detects endogenous levels of total CCKAR protein.
Immunogen Type	Peptide
Immunogen Description	Synthetic peptide corresponding to residues near the C terminal of human cholecystokinin A receptor
Target Name	CCKAR
Other Names	CCK-A; CCKRA; CCK1-R
Accession No.	Swiss-Prot#: P32238NCBI Gene ID: 886Gene Accssion: NP_000721
Uniprot	P32238
GeneID	886;
Concentration	0.9mg/ml
Formulation	Rabbit IgG in pH7.4 PBS, 0.05% NaN ₃ , 40% Glycerol.
Storage	Store at -20°C

Application Details

Immunohistochemistry: 1:10-1:50

Images



Immunohistochemical analysis of paraffin-embedded Human brain tissue using #36882 at dilution 1/20.

Background

This gene encodes a G-protein coupled receptor that binds non-sulfated members of the cholecystokinin (CCK) family of peptide hormones. This receptor is a major physiologic mediator of pancreatic enzyme secretion and smooth muscle contraction of the gallbladder and stomach. In the central and peripheral nervous system this receptor regulates satiety and the release of beta-endorphin and dopamine.

Note: This product is for in vitro research use only