

## CMTM7 Antibody

Catalog No: #36884

Orders: [order@signalwayantibody.com](mailto:order@signalwayantibody.com)Support: [tech@signalwayantibody.com](mailto:tech@signalwayantibody.com)

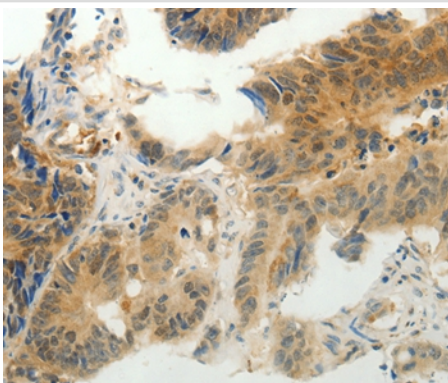
## Description

|                       |  |
|-----------------------|--|
| Product Name          | CMTM7 Antibody   |
| Host Species          | Rabbit   |
| Clonality             | Polyclonal   |
| Purification          | Antigen affinity purification.   |
| Applications          | IHC  |
| Species Reactivity    | Hu   |
| Specificity           | The antibody detects endogenous levels of total CMTM7 protein.   |
| Immunogen Type        | Peptide  |
| Immunogen Description | Synthetic peptide corresponding to a region derived from internal residues of human CKLF-like MARVEL transmembrane domain containing 7 |
| Target Name           | CMTM7  |
| Other Names           | CKLFSF7  |
| Accession No.         | Swiss-Prot#: Q96FZ5NCBI Gene ID: 112616Gene Accssion: NP_612419  |
| Uniprot               | Q96FZ5   |
| GeneID                | 112616;  |
| Concentration         | 1.8mg/ml   |
| Formulation           | Rabbit IgG in pH7.4 PBS, 0.05% NaN <sub>3</sub> , 40% Glycerol.  |
| Storage               | Store at -20°C   |

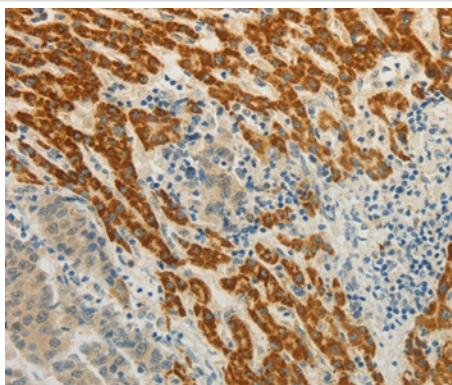
## Application Details

Immunohistochemistry: 1:25-1:100

## Images



Immunohistochemical analysis of paraffin-embedded Human colon cancer tissue using #36884 at dilution 1/30.



Immunohistochemical analysis of paraffin-embedded Human liver cancer tissue using #36884 at dilution 1/30.

## Background

This gene belongs to the chemokine-like factor gene superfamily, a novel family that is similar to the chemokine and transmembrane 4 superfamilies. This gene is one of several chemokine-like factor genes located in a cluster on chromosome 3. The protein encoded by this gene is highly expressed in leukocytes, but its exact function is unknown. Alternatively spliced transcript variants encoding different isoforms have been identified.

Note: This product is for in vitro research use only