

CMTM5 Antibody

Catalog No: #36885

Orders: order@signalwayantibody.comSupport: tech@signalwayantibody.com

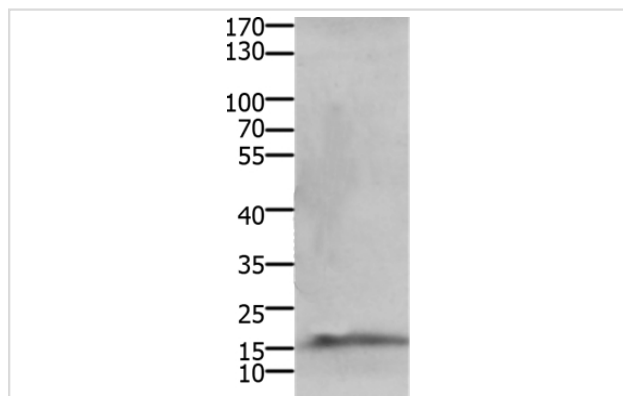
Description

Product Name	CMTM5 Antibody
Host Species	Rabbit
Clonality	Polyclonal
Purification	Antigen affinity purification.
Applications	WB
Species Reactivity	Hu Ms
Specificity	The antibody detects endogenous levels of total CMTM5 protein.
Immunogen Type	Peptide
Immunogen Description	Synthetic peptide corresponding to residues near the N terminal of human CKLF-like MARVEL transmembrane domain containing 5
Target Name	CMTM5
Other Names	CKLFSF5
Accession No.	Swiss-Prot#: Q96DZ9NCBI Gene ID: 116173Gene Accssion: NP_612469
Uniprot	Q96DZ9
GeneID	116173;
SDS-PAGE MW	13kd
Concentration	0.8mg/ml
Formulation	Rabbit IgG in pH7.4 PBS, 0.05% NaN ₃ , 40% Glycerol.
Storage	Store at -20°C

Application Details

Western blotting: 1:500-1:2000

Images



Gel: 15%+12%SDS-PAGE
 Lysates (from left to right): Mouse heart tissue
 Amount of lysate: 40ug per lane
 Primary antibody: 1/400 dilution
 Secondary antibody dilution: 1/8000
 Exposure time: 1 minute

Background

This gene belongs to the chemokine-like factor gene superfamily. This family of genes encodes multi-pass membrane proteins that are similar to both

the chemokine and the transmembrane 4 superfamilies of signaling molecules. Alternate transcriptional splice variants of this gene, encoding different isoforms, have been characterized. Highly expressed in the brain.

Note: This product is for in vitro research use only