

CMTM6 Antibody

Catalog No: #36886

Orders: order@signalwayantibody.comSupport: tech@signalwayantibody.com

Description

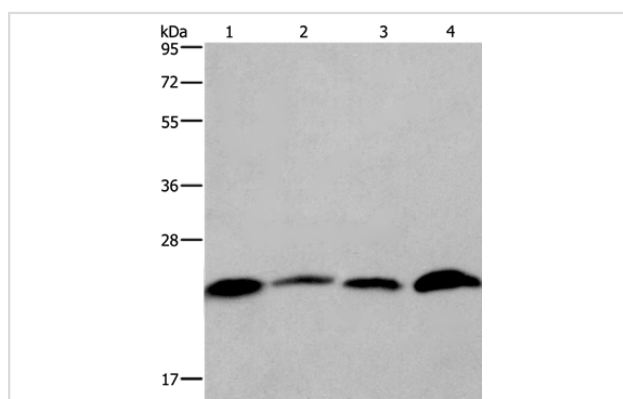
Product Name	CMTM6 Antibody
Host Species	Rabbit
Clonality	Polyclonal
Purification	Antigen affinity purification.
Applications	WB IHC
Species Reactivity	Hu
Specificity	The antibody detects endogenous levels of total CMTM6 protein.
Immunogen Type	Peptide
Immunogen Description	Synthetic peptide corresponding to residues near the C terminal of human CKLF-like MARVEL transmembrane domain containing 6
Target Name	CMTM6
Other Names	CKLFSF6; PRO2219
Accession No.	Swiss-Prot#: Q9NX76NCBI Gene ID: 54918Gene Accssion: NP_060271
Uniprot	Q9NX76
GeneID	54918;
SDS-PAGE MW	20kd
Concentration	0.7mg/ml
Formulation	Rabbit IgG in pH7.4 PBS, 0.05% NaN ₃ , 40% Glycerol.
Storage	Store at -20°C

Application Details

Western blotting: 1:200-1:1000

Immunohistochemistry: 1:20-1:100

Images



Gel: 10%SDS-PAGE

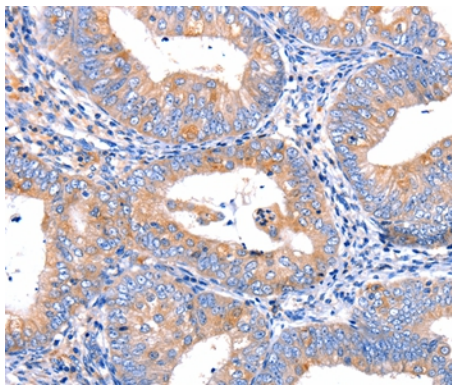
Lysates (from left to right): Human placenta and testis tissue,
Hela and Raji cells

Amount of lysate: 40ug per lane

Primary antibody: 1/350 dilution

Secondary antibody dilution: 1/8000

Exposure time: 2 minutes



Immunohistochemical analysis of paraffin-embedded Human cervical cancer tissue using #36886 at dilution 1/17.

Background

This gene belongs to the chemokine-like factor gene superfamily, a novel family that is similar to the chemokine and transmembrane 4 superfamilies. This gene is one of several chemokine-like factor genes located in a cluster on chromosome 3. This gene is widely expressed in many tissues, but the exact function of the encoded protein is unknown.?

Note: This product is for in vitro research use only