

CMTM8 Antibody

Catalog No: #36887

Orders: order@signalwayantibody.comSupport: tech@signalwayantibody.com

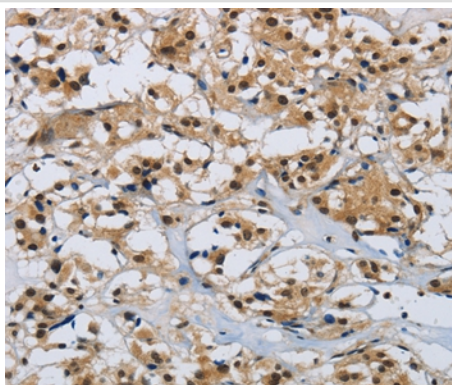
Description

Product Name	CMTM8 Antibody
Host Species	Rabbit
Clonality	Polyclonal
Purification	Antigen affinity purification.
Applications	IHC
Species Reactivity	Hu
Specificity	The antibody detects endogenous levels of total CMTM8 protein.
Immunogen Type	Peptide
Immunogen Description	Synthetic peptide corresponding to residues near the N terminal of human CKLF-like MARVEL transmembrane domain containing 8
Target Name	CMTM8
Other Names	CKLFSF8; CKLFSF8-V2
Accession No.	Swiss-Prot#: Q8IZV2NCBI Gene ID: 152189Gene Accssion: NP_849199
Uniprot	Q8IZV2
GeneID	152189;
Concentration	2.2mg/ml
Formulation	Rabbit IgG in pH7.4 PBS, 0.05% NaN ₃ , 40% Glycerol.
Storage	Store at -20°C

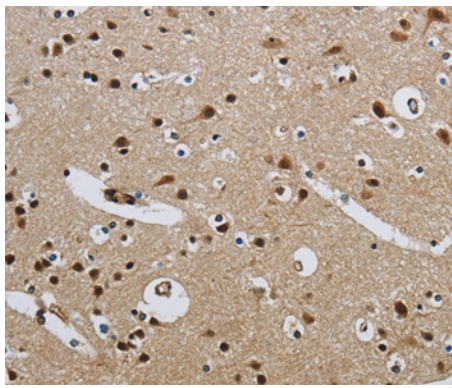
Application Details

Immunohistochemistry: 1:50-1:200

Images



Immunohistochemical analysis of paraffin-embedded Human thyroid cancer tissue using #36887 at dilution 1/40.



Immunohistochemical analysis of paraffin-embedded Human brain tissue using #36887 at dilution 1/40.

Background

This gene belongs to the chemokine-like factor gene superfamily, a novel family that is similar to the chemokine and the transmembrane 4 superfamilies. This gene is one of several chemokine-like factor genes located in a cluster on chromosome 3. This gene is widely expressed in many tissues, but the exact function of the encoded protein is unknown.?

Note: This product is for in vitro research use only