

CLDN14 Antibody

Catalog No: #36891

Orders: order@signalwayantibody.comSupport: tech@signalwayantibody.com

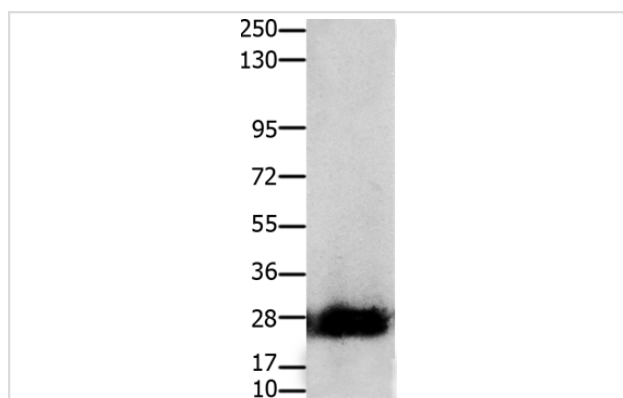
Description

Product Name	CLDN14 Antibody
Host Species	Rabbit
Clonality	Polyclonal
Purification	Antigen affinity purification.
Applications	WB
Species Reactivity	Hu Ms
Specificity	The antibody detects endogenous levels of total CLDN14 protein.
Immunogen Type	Peptide
Immunogen Description	Synthetic peptide corresponding to residues near the C terminal of human claudin 14
Target Name	CLDN14
Other Names	DFNB29
Accession No.	Swiss-Prot#: O95500NCBI Gene ID: 23562Gene Accssion: NP_036262
Uniprot	O95500
GeneID	23562;
SDS-PAGE MW	26kd
Concentration	1.6mg/ml
Formulation	Rabbit IgG in pH7.4 PBS, 0.05% NaN ₃ , 40% Glycerol.
Storage	Store at -20°C

Application Details

Western blotting: 1:200-1:1000

Images



Gel: 10%SDS-PAGE
 Lysates (from left to right): Mouse pancreas tissue
 Amount of lysate: 30ug per lane
 Primary antibody: 1/200 dilution
 Secondary antibody dilution: 1/8000
 Exposure time: 50 seconds

Background

Tight junctions represent one mode of cell-to-cell adhesion in epithelial or endothelial cell sheets, forming continuous seals around cells and serving as a physical barrier to prevent solutes and water from passing freely through the paracellular space. These junctions are comprised of sets of continuous

networking strands in the outwardly facing cytoplasmic leaflet, with complementary grooves in the inwardly facing extracytoplasmic leaflet. The protein encoded by this gene, a member of the claudin family, is an integral membrane protein and a component of tight junction strands. The encoded protein also binds specifically to the WW domain of Yes-associated protein. Defects in this gene are the cause of an autosomal recessive form of nonsyndromic sensorineural deafness. It is also reported that four synonymous variants in this gene are associated with kidney stones and reduced bone mineral density. Several transcript variants encoding the same protein have been found for this gene.

Note: This product is for in vitro research use only