

GAS6 Antibody

Catalog No: #36894

Orders: order@signalwayantibody.comSupport: tech@signalwayantibody.com

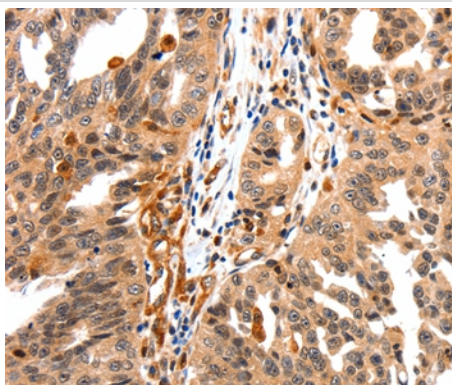
Description

Product Name	GAS6 Antibody
Host Species	Rabbit
Clonality	Polyclonal
Purification	Antigen affinity purification.
Applications	IHC
Species Reactivity	Hu
Specificity	The antibody detects endogenous levels of total GAS6 protein.
Immunogen Type	Peptide
Immunogen Description	Synthetic peptide corresponding to a region derived from internal residues of human growth arrest-specific 6
Target Name	GAS6
Other Names	AXSF; AXLLG
Accession No.	Swiss-Prot#: Q14393NCBI Gene ID: 2621Gene Accssion: NP_000811
Uniprot	Q14393
GeneID	2621;
Concentration	0.4mg/ml
Formulation	Rabbit IgG in pH7.4 PBS, 0.05% NaN ₃ , 40% Glycerol.
Storage	Store at -20°C

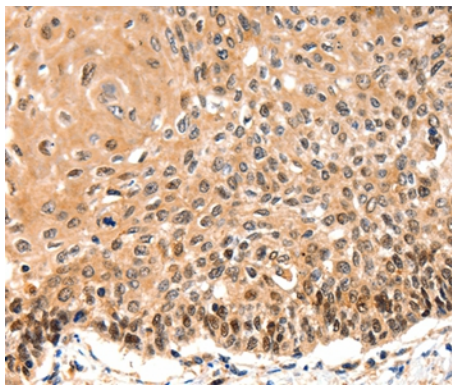
Application Details

Immunohistochemistry: 1:10-1:50

Images



Immunohistochemical analysis of paraffin-embedded Human ovarian cancer tissue using #36894 at dilution 1/10.



Immunohistochemical analysis of paraffin-embedded Human cervical cancer tissue using #36894 at dilution 1/10.

Background

This gene product is a gamma-carboxyglutamic acid (Gla)-containing protein thought to be involved in the stimulation of cell proliferation, and may play a role in thrombosis. Alternatively spliced transcript variants encoding different isoforms have been found for this gene. Ligand for tyrosine-protein kinase receptors AXL, TYRO3 and MER whose signaling is implicated in cell growth and survival, cell adhesion and cell migration. GAS6/AXL signaling plays a role in various processes such as endothelial cell survival during acidification by preventing apoptosis, optimal cytokine signaling during human natural killer cell development, hepatic regeneration, gonadotropin-releasing hormone neuron survival and migration, platelet activation, or regulation of thrombotic responses.

Note: This product is for in vitro research use only