

SLC2A11 Antibody

Catalog No: #36905

Orders: order@signalwayantibody.comSupport: tech@signalwayantibody.com

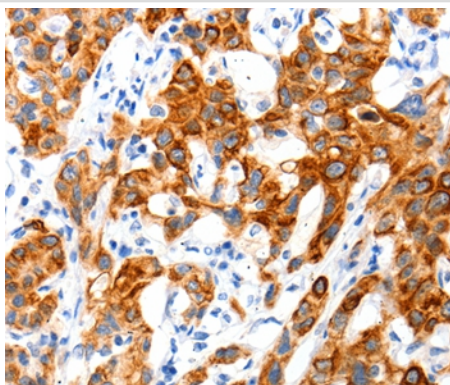
Description

Product Name	SLC2A11 Antibody
Host Species	Rabbit
Clonality	Polyclonal
Purification	Antigen affinity purification.
Applications	IHC
Species Reactivity	Hu
Specificity	The antibody detects endogenous levels of total SLC2A11 protein.
Immunogen Type	Peptide
Immunogen Description	Synthetic peptide corresponding to residues near the C terminal of human solute carrier family 2 (facilitated glucose transporter), member 11
Target Name	SLC2A11
Other Names	GLUT10; GLUT11; SLC2A11-a; SLC2A11-c
Accession No.	Swiss-Prot#: Q9BYW1 NCBI Gene ID: 66035Gene Accssion: NP_110434
Uniprot	Q9BYW1
GeneID	66035;
Concentration	2.7mg/ml
Formulation	Rabbit IgG in pH7.4 PBS, 0.05% NaN ₃ , 40% Glycerol.
Storage	Store at -20°C

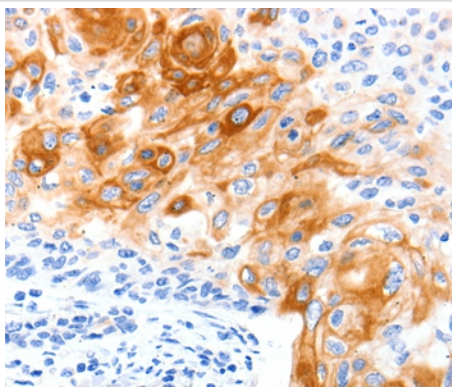
Application Details

Immunohistochemistry: 1:100-1:300

Images



Immunohistochemical analysis of paraffin-embedded Human lung cancer tissue using #36905 at dilution 1/140.



Immunohistochemical analysis of paraffin-embedded Human cervical cancer tissue using #36905 at dilution 1/140.

Background

Solute carrier family 2, facilitated glucose transporter member 11 (SLC2A11) also known as glucose transporter type 10/11 (GLUT-10/11) is a protein that in humans is encoded by the SLC2A11 gene. SLC2A11 belongs to a family of plasma membrane proteins that mediate transport of sugars across the membrane by facilitative diffusion.

Note: This product is for in vitro research use only