

GRB10 Antibody

Catalog No: #36908

Orders: order@signalwayantibody.comSupport: tech@signalwayantibody.com

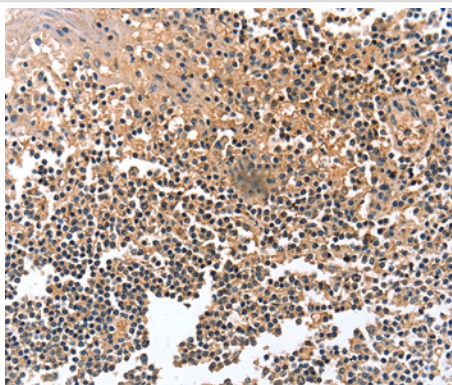
Description

Product Name	GRB10 Antibody
Host Species	Rabbit
Clonality	Polyclonal
Purification	Antigen affinity purification.
Applications	IHC
Species Reactivity	Hu
Specificity	The antibody detects endogenous levels of total GRB10 protein.
Immunogen Type	Peptide
Immunogen Description	Synthetic peptide corresponding to a region derived from internal residues of human growth factor receptor-bound protein 10
Target Name	GRB10
Other Names	RSS; IRBP; MEG1; GRB-IR; Grb-10
Accession No.	Swiss-Prot#: Q13322NCBI Gene ID: 2887Gene Accssion: NP_005302
Uniprot	Q13322
GeneID	2887;
Concentration	0.5mg/ml
Formulation	Rabbit IgG in pH7.4 PBS, 0.05% NaN ₃ , 40% Glycerol.
Storage	Store at -20°C

Application Details

Immunohistochemistry: 1:10-1:50

Images



Immunohistochemical analysis of paraffin-embedded Human tonsil tissue using #36908 at dilution 1/12.

Background

The product of this gene belongs to a small family of adapter proteins that are known to interact with a number of receptor tyrosine kinases and signaling molecules. This gene encodes a growth factor receptor-binding protein that interacts with insulin receptors and insulin-like growth-factor

receptors. Overexpression of some isoforms of the encoded protein inhibits tyrosine kinase activity and results in growth suppression. This gene is imprinted in a highly isoform- and tissue-specific manner, with expression observed from the paternal allele in the brain, and from the maternal allele in the placental trophoblasts. Alternatively spliced transcript variants encoding different isoforms have been identified.

Note: This product is for in vitro research use only