

GSK3B Antibody

Catalog No: #36918

Orders: order@signalwayantibody.comSupport: tech@signalwayantibody.com

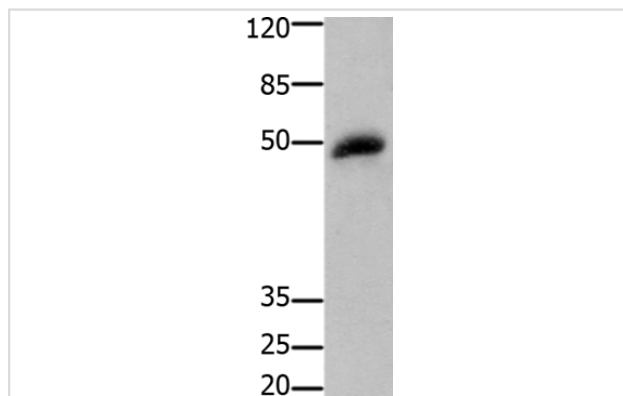
Description

Product Name	GSK3B Antibody
Host Species	Rabbit
Clonality	Polyclonal
Purification	Antigen affinity purification.
Applications	WB
Species Reactivity	Hu
Specificity	The antibody detects endogenous levels of total GSK3B protein.
Immunogen Type	Peptide
Immunogen Description	Synthetic peptide corresponding to a region derived from internal residues of human glycogen synthase kinase 3 beta
Target Name	GSK3B
Other Names	GSK-3 beta; GSK3B; GSK3beta isoform
Accession No.	Swiss-Prot#: P49841NCBI Gene ID: 2932Gene Accssion: NP_002084
Uniprot	P49841
GeneID	2932;
SDS-PAGE MW	48kd
Concentration	1.6mg/ml
Formulation	Rabbit IgG in pH7.4 PBS, 0.05% NaN ₃ , 40% Glycerol.
Storage	Store at -20°C

Application Details

Western blotting: 1:500-1:2000

Images



Gel: 10%SDS-PAGE
Lysates (from left to right): Human small intestine stromal cancer tissue
Amount of lysate: 30ug per lane
Primary antibody: 1/100 dilution
Secondary antibody dilution: 1/8000
Exposure time: 5 minutes

Background

The protein encoded by this gene is a serine-threonine kinase, belonging to the glycogen synthase kinase subfamily. It is involved in energy

metabolism, neuronal cell development, and body pattern formation. Polymorphisms in this gene have been implicated in modifying risk of Parkinson disease, and studies in mice show that overexpression of this gene may be relevant to the pathogenesis of Alzheimer disease. Alternatively spliced transcript variants encoding different isoforms have been found for this gene.

Note: This product is for in vitro research use only