

KCNH8 Antibody

Catalog No: #36921

Orders: order@signalwayantibody.comSupport: tech@signalwayantibody.com

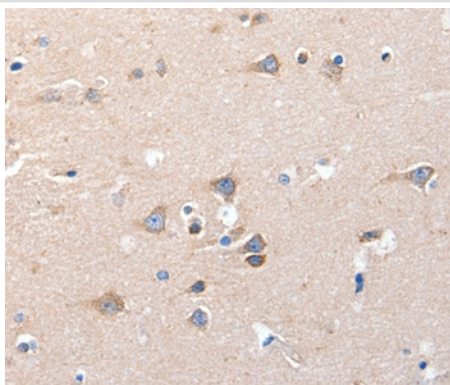
Description

Product Name	KCNH8 Antibody
Host Species	Rabbit
Clonality	Polyclonal
Purification	Antigen affinity purification.
Applications	IHC
Species Reactivity	Hu
Specificity	The antibody detects endogenous levels of total KCNH8 protein.
Immunogen Type	Peptide
Immunogen Description	Synthetic peptide corresponding to residues near the C terminal of human potassium voltage-gated channel, subfamily H (eag-related), member 8
Target Name	KCNH8
Other Names	ELK; ELK1; elk3; Kv12.1
Accession No.	Swiss-Prot#: Q96L42NCBI Gene ID: 131096Gene Accssion: NP_653234
Uniprot	Q96L42
GeneID	131096;
Concentration	0.6mg/ml
Formulation	Rabbit IgG in pH7.4 PBS, 0.05% NaN ₃ , 40% Glycerol.
Storage	Store at -20°C

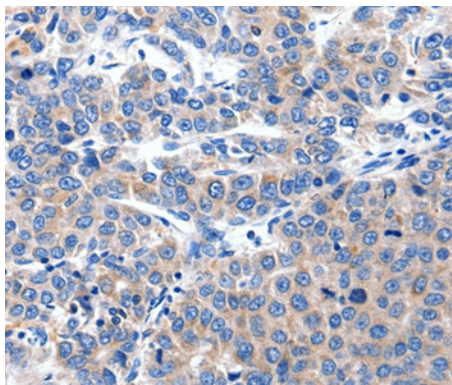
Application Details

Immunohistochemistry: 1:10-1:50

Images



Immunohistochemical analysis of paraffin-embedded Human brain cancer tissue using #36921 at dilution 1/15.



Immunohistochemical analysis of paraffin-embedded Human liver cancer tissue using #36921 at dilution 1/15.

Background

Voltage-gated potassium (Kv) channels represent the most complex class of voltage-gated ion channels from both functional and structural standpoints. Their diverse functions include regulating neurotransmitter release, heart rate, insulin secretion, neuronal excitability, epithelial electrolyte transport, smooth muscle contraction, and cell volume. This gene encodes a member of the potassium channel, voltage-gated, subfamily H. This member is a pore-forming (alpha) subunit.

Note: This product is for in vitro research use only