

## ALDH3B2 antibody

Catalog No: #22169

Orders: [order@signalwayantibody.com](mailto:order@signalwayantibody.com)Support: [tech@signalwayantibody.com](mailto:tech@signalwayantibody.com)

## Description

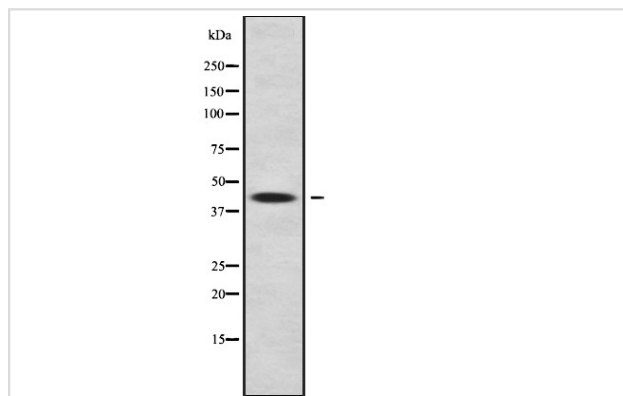
Product Name	ALDH3B2 antibody
Host Species	Rabbit
Clonality	Polyclonal
Purification	Purified by antigen-affinity chromatography.
Applications	WB
Species Reactivity	Hu
Immunogen Description	A synthesized peptide derived from human ALDH3B2
Target Name	ALDH3B2
Accession No.	NCBI Gene ID: 222NCBI mRNA#: NM_000695NCBI Protein#: NP_000686
GeneID	222;
Formulation	Rabbit IgG in phosphate buffered saline , pH 7.4, 150mM NaCl, 0.02% sodium azide and 50% glycerol.
Storage	Store at -20°C for long term preservation (recommended). Store at 4°C for short term use.

## Application Details

Predicted MW: 43kd

Western blotting: 1:500-1:3000

## Images



Western blot analysis ALDH3B2 using LOVO whole cell lysates

## Background

This gene encodes a member of the aldehyde dehydrogenase family, a group of isozymes that may play a major role in the detoxification of aldehydes generated by alcohol metabolism and lipid peroxidation. The gene of this particular family member is over 10 kb in length. The expression of these transcripts is restricted to the salivary gland among the human tissues examined. Alternate transcriptional splice variants have been characterized. [provided by RefSeq]

---

Note: This product is for in vitro research use only