

## LAMA3 Antibody

Catalog No: #36945

Orders: [order@signalwayantibody.com](mailto:order@signalwayantibody.com)Support: [tech@signalwayantibody.com](mailto:tech@signalwayantibody.com)

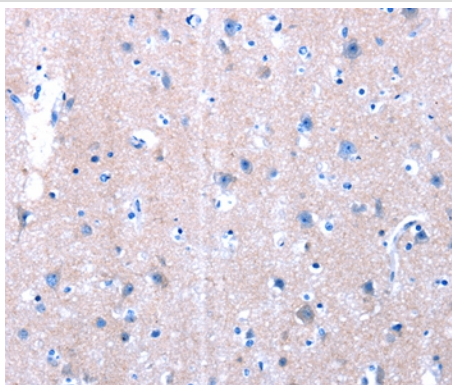
## Description

Product Name	LAMA3 Antibody
Host Species	Rabbit
Clonality	Polyclonal
Purification	Antigen affinity purification.
Applications	IHC
Species Reactivity	Hu
Specificity	The antibody detects endogenous levels of total LAMA3 protein.
Immunogen Type	Peptide
Immunogen Description	Synthetic peptide corresponding to a region derived from internal residues of human laminin, alpha 3
Target Name	LAMA3
Other Names	E170; LOCS; BM600; LAMNA; lama3a
Accession No.	Swiss-Prot#: Q16787NCBI Gene ID: 3909Gene Accssion: NP_000218
Uniprot	Q16787
GeneID	3909;
Concentration	0.5mg/ml
Formulation	Rabbit IgG in pH7.4 PBS, 0.05% NaN <sub>3</sub> , 40% Glycerol.
Storage	Store at -20°C

## Application Details

Immunohistochemistry: 1:10-1:50

## Images



Immunohistochemical analysis of paraffin-embedded Human brain tissue using #36945 at dilution 1/10.

## Background

Laminins are basement membrane components thought to mediate the attachment, migration and organization of cells into tissues during embryonic development by interacting with other extracellular matrix components. The protein encoded by this gene is the alpha-3 subunit of laminin 5, which is a complex glycoprotein composed of three subunits (alpha, beta, and gamma). Laminin 5 is thought to be involved in cell adhesion, signal transduction and differentiation of keratinocytes. Mutations in this gene have been identified as the cause of Herlitz type junctional epidermolysis bullosa.

Alternatively spliced transcript variants encoding different isoforms have been identified for this gene.

---

Note: This product is for in vitro research use only