

## LRIG3 Antibody

Catalog No: #36955

Orders: [order@signalwayantibody.com](mailto:order@signalwayantibody.com)Support: [tech@signalwayantibody.com](mailto:tech@signalwayantibody.com)

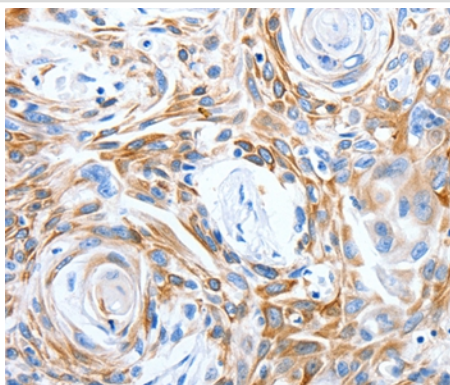
## Description

Product Name	LRIG3 Antibody
Host Species	Rabbit
Clonality	Polyclonal
Purification	Antigen affinity purification.
Applications	IHC
Species Reactivity	Hu
Specificity	The antibody detects endogenous levels of total LRIG3 protein.
Immunogen Type	Peptide
Immunogen Description	Synthetic peptide corresponding to residues near the C terminal of human leucine-rich repeats and immunoglobulin-like domains 3
Target Name	LRIG3
Other Names	LIG3
Accession No.	Swiss-Prot#: Q6UXM1NCBI Gene ID: 121227Gene Accssion: NP_700356
Uniprot	Q6UXM1
GeneID	121227;
Concentration	1.9mg/ml
Formulation	Rabbit IgG in pH7.4 PBS, 0.05% NaN <sub>3</sub> , 40% Glycerol.
Storage	Store at -20°C

## Application Details

Immunohistochemistry: 1:25-1:100

## Images



Immunohistochemical analysis of paraffin-embedded Human esophagus cancer tissue using #36955 at dilution 1/50.

## Background

Leucine-rich repeats and immunoglobulin-like domains 3 (Lrig3) was identified by microarray analysis among genes that show differential expression during gastrulation in *Xenopus laevis*. Lrig3 was expressed in the neural plate and neural crest (NC) at neurula stages, and in NC derivatives and

other dorsal structures during tailbud stages. A prominent consequence of the morpholino-induced inhibition of *Lrig3* expression was impaired NC formation, as revealed by the suppression of marker genes, including *Slug*, *Sox9* and *Foxd3*.

---

Note: This product is for in vitro research use only