

MMP26 Antibody

Catalog No: #36987

Orders: order@signalwayantibody.comSupport: tech@signalwayantibody.com

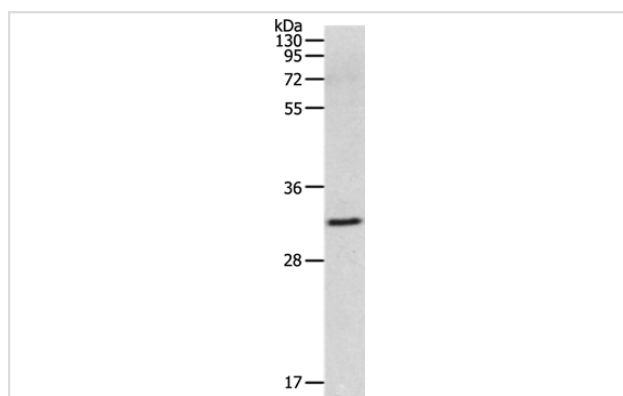
Description

Product Name	MMP26 Antibody
Host Species	Rabbit
Clonality	Polyclonal
Purification	Antigen affinity purification.
Applications	WB
Species Reactivity	Hu
Specificity	The antibody detects endogenous levels of total MMP26 protein.
Immunogen Type	Peptide
Immunogen Description	Synthetic peptide corresponding to residues near the C terminal of human Matrix metalloproteinase 26
Target Name	MMP26
Other Names	Endometase; matrilysin 2; Matrilysin-2; MGC126590; MGC126592; MMP-26; MMP26
Accession No.	Swiss-Prot#: Q9NRE1NCBI Gene ID: 56547Gene Accssion: NP_068573
Uniprot	Q9NRE1
GeneID	56547;
SDS-PAGE MW	30kd
Concentration	1.4mg/ml
Formulation	Rabbit IgG in pH7.4 PBS, 0.05% NaN ₃ , 40% Glycerol.
Storage	Store at -20°C

Application Details

Western blotting: 1:200-1:1000

Images



Gel: 10%SDS-PAGE
 Lysate: 60ug 293T cell
 Primary antibody: 1/500 dilution
 Secondary antibody dilution: 1/8000
 Exposure time: 10 minutes

Background

Proteins of the matrix metalloproteinase (MMP) family are involved in the breakdown of extracellular matrix in normal physiological processes, such as embryonic development, reproduction, and tissue remodeling, as well as in disease processes, such as arthritis and metastasis. Most MMP's are

secreted as inactive proproteins which are activated when cleaved by extracellular proteinases. The encoded protein degrades type IV collagen, fibronectin, fibrinogen, casein, vitronectin, alpha 1-antitrypsin, alpha 2-macroglobulin, and insulin-like growth factor-binding protein 1, and activates MMP9 by cleavage. The protein differs from most MMP family members in that it lacks a conserved C-terminal protein domain.

Note: This product is for in vitro research use only