

DKFZP686A01247 antibody

Catalog No: #22177



Orders: order@signalwayantibody.com
Support: tech@signalwayantibody.com

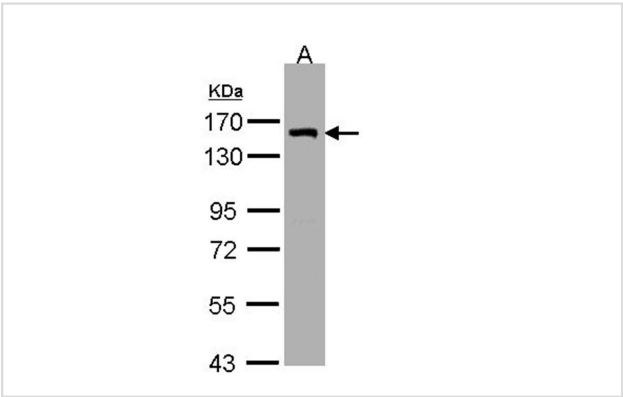
Description

Product Name	DKFZP686A01247 antibody
Host Species	Rabbit
Clonality	Polyclonal
Purification	Purified by antigen-affinity chromatography.
Applications	WB IHC
Species Reactivity	Hu
Immunogen Type	Recombinant protein
Immunogen Description	Recombinant protein fragment contain a sequence corresponding to a region within amino acids 734 and 1057 of Human LIMCH1
Target Name	DKFZP686A01247
Accession No.	Swiss-Prot:Q9UPQ0Gene ID:22998
Uniprot	Q9UPQ0
GeneID	22998;
Concentration	1mg/ml
Formulation	Supplied in 0.1M Tris-buffered saline with 10% Glycerol (pH7.0). 0.01% Thimerosal was added as a preservative.
Storage	Store at -20°C for long term preservation (recommended). Store at 4°C for short term use.

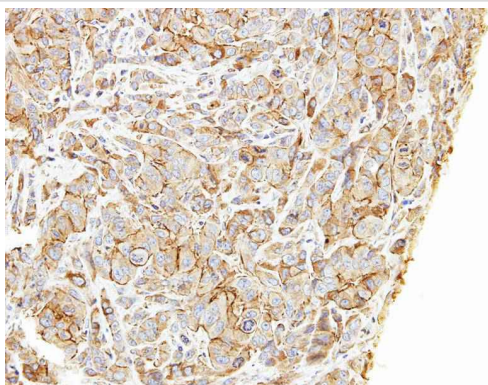
Application Details

Predicted MW: 119kd
Western blotting: 1:500-1:3000
Immunohistochemistry: 1:50-1:500

Images



Sample (30ug whole cell lysate)
A: H1299
7.5% SDS PAGE
Primary antibody diluted at 1: 3000



Immunohistochemical analysis of paraffin-embedded A549 xenograft, using LIMCH1 antibody at 1: 500 dilution.

Note: This product is for in vitro research use only