

PAWR Antibody

Catalog No: #37011

Orders: order@signalwayantibody.comSupport: tech@signalwayantibody.com

Description

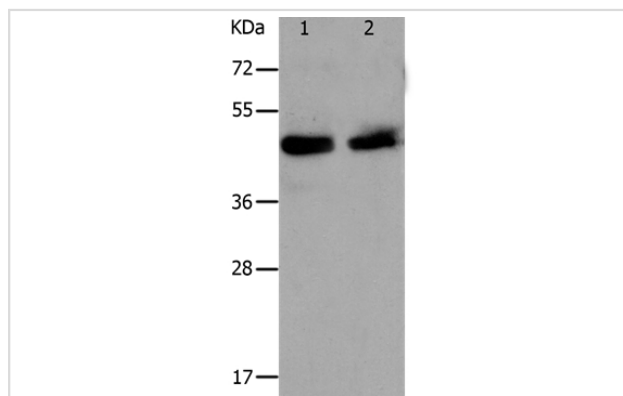
Product Name	PAWR Antibody
Host Species	Rabbit
Clonality	Polyclonal
Purification	Antigen affinity purification.
Applications	WB IHC
Species Reactivity	Hu
Specificity	The antibody detects endogenous levels of total PAWR protein.
Immunogen Type	Peptide
Immunogen Description	Synthetic peptide corresponding to a region derived from internal residues of human PRKC, apoptosis, WT1, regulator
Target Name	PAWR
Other Names	PAR4; Par-4
Accession No.	Swiss-Prot#: Q96IZ0NCBI Gene ID: 5074Gene Accssion: NP_002574
Uniprot	Q96IZ0
GeneID	5074;
SDS-PAGE MW	37kd
Concentration	2.4mg/ml
Formulation	Rabbit IgG in pH7.4 PBS, 0.05% NaN ₃ , 40% Glycerol.
Storage	Store at -20°C

Application Details

Western blotting: 1:1000-1:3000

Immunohistochemistry: 1:25-1:100

Images



Gel: 10%SDS-PAGE

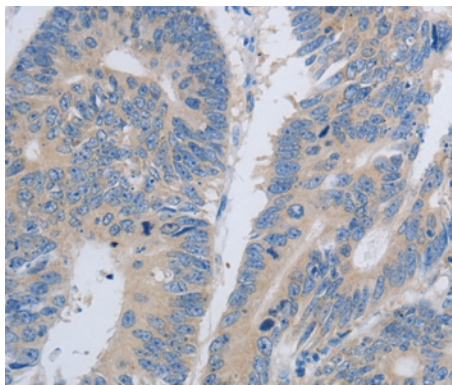
Lysates (from left to right): HeLa and A549 cell

Amount of lysate: 30ug per lane

Primary antibody: 1/1200 dilution

Secondary antibody dilution: 1/8000

Exposure time: 10 seconds



Immunohistochemical analysis of paraffin-embedded Human colon cancer tissue using #37011 at dilution 1/60.

Background

The tumor suppressor WT1 represses and activates transcription. The protein encoded by this gene is a WT1-interacting protein that itself functions as a transcriptional repressor. It contains a putative leucine zipper domain which interacts with the zinc finger DNA binding domain of WT1. This protein is specifically upregulated during apoptosis of prostate cells.?

Note: This product is for in vitro research use only