

RAMP2 Antibody

Catalog No: #37019

Orders: order@signalwayantibody.comSupport: tech@signalwayantibody.com

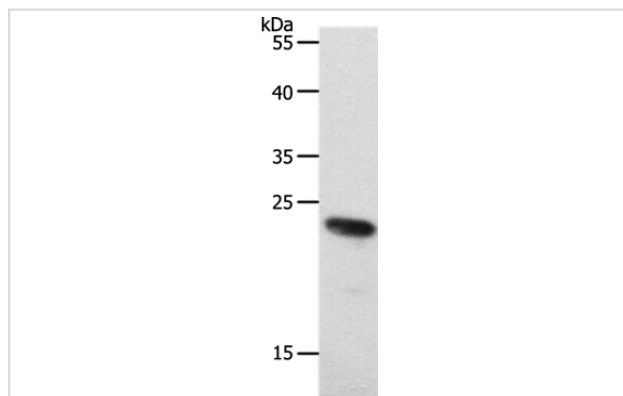
Description

Product Name	RAMP2 Antibody
Host Species	Rabbit
Clonality	Polyclonal
Purification	Antigen affinity purification.
Applications	WB
Species Reactivity	Hu
Specificity	The antibody detects endogenous levels of total RAMP2 protein.
Immunogen Type	Peptide
Immunogen Description	Synthetic peptide corresponding to a region derived from internal residues of human Receptor (G protein-coupled) activity modifying protein 2
Target Name	RAMP2
Other Names	RAMP2; Receptor activity-modifying protein 2; receptor-activity-modifying protein 2
Accession No.	Swiss-Prot#: O60895 NCBI Gene ID: 10266Gene Accssion: NP_005845
Uniprot	O60895
GeneID	10266;
SDS-PAGE MW	20kd
Concentration	1.3mg/ml
Formulation	Rabbit IgG in pH7.4 PBS, 0.05% NaN ₃ , 40% Glycerol.
Storage	Store at -20°C

Application Details

Western blotting: 1:500-1:2000

Images



Gel: 10%SDS-PAGE
Lysate: 40ug 231 cell
Primary antibody: 1/650 dilution
Secondary antibody dilution: 1/8000
Exposure time: 5 minutes

Background

The protein encoded by this gene is a member of the RAMP family of single-transmembrane-domain proteins, called receptor (calcitonin) activity

modifying proteins (RAMPs). RAMPs are type I transmembrane proteins with an extracellular N terminus and a cytoplasmic C terminus. RAMPs are required to transport calcitonin-receptor-like receptor (CRLR) to the plasma membrane. CRLR, a receptor with seven transmembrane domains, can function as either a calcitonin-gene-related peptide (CGRP) receptor or an adrenomedullin receptor, depending on which members of the RAMP family are expressed. In the presence of this (RAMP2) protein, CRLR functions as an adrenomedullin receptor. The RAMP2 protein is involved in core glycosylation and transportation of adrenomedullin receptor to the cell surface.

Note: This product is for in vitro research use only